

Florida State University Fact Book 1978

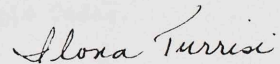


THE FLORIDA STATE UNIVERSITY
FACT BOOK

FOREWARD

The 1978 Florida State University Fact Book should hopefully provide useful, time-saving, and informative summaries of University data. The book is divided into five sections: academic program information, student information, faculty information, library information and financial data. Sources are indicated on each table and where possible, the information was obtained from official files submitted to the Board of Regents.

Should you have any questions or comments, please do not hesitate to call us. The responsibility for the sections was as follows: student information: Ms. Betty Tilton, financial data: Mr. Rafael Alvarez; all other sections: Mr. John Kalb. Tables included in this edition of the Fact Book are a result of data requests and general information provided by this office.



Ilona Turrisi
Director
Budget and Analysis

TABLE OF CONTENTS

FORWARD	Page
SECTION I	1
Table I-1. Degrees Awarded by Schools and Colleges	2
Table I-2. Organizational Structure of the Florida State University	
Table I-2-A. President's Area	5
Table I-2-B. Vice President for Academic Affairs' Area	6
Table I-2-C. Vice President for University Relations' Area	7
Table I-2-D. Vice President for Administrative Affairs' Area	8
Table I-2-E. Vice President for Student Affairs' Area	9
Table I-3. Office of Summer Sessions and Continuing Studies	10
Table I-3-1. Number of Registrations in Off-Campus Courses by Quarters	11
Table I-3-2. Number of Degree Programs Each Quarter.	12
Table I-4. The Center for Professional Development and Public Service.	13
Table I-4-1. Total Number of Florida State University Faculty Instructing in CEU Programs in 1976-77 (Chart 1)	14
Table I-4-2. Total Continuing Education Units (CEU'S) 1976-77 by Florida State University Colleges or Schools (Chart 2).	15
Table I-4-3. Center for Professional Development and Public Service Non-Credit Instructional Activities (Chart 3)	16
Table I-5. Degree Program Inventory Major Codes and Hegis Codes.	17
SECTION II	24
Table II-1. State Fundable Student Credit Hours by School and Department Fall Quarters	26
Table II-2. State Fundable Student Credit Hours by School and Department Four Quarter Average	48
Table II-3. Geographical Origin of FSU Students by Florida County, Fall 1977	70
Table II-4. Florida Community/Junior College Students Transferring to FSU, Fall Quarters Headcount Enrollment and Percent of Total Junior College Transfers	71

TABLE OF CONTENTS (continued)

	Page
SECTION II (continued)	
Table II-5. U.S. Sources of FSU Enrollment, Fall 1977	73
Table II-6. Student Profile	74
Table II-7. Rank Order of Undergraduate Majors at FSU Fall 1977	75
Table II-8. Rank Order of Graduate Majors at FSU Fall 1977	78
Table II-9. National Sources of Students	81
Table II-10. Percentage Distribution of FSU Credit Hours by Level	82
Table II-11. FSU Credit Hour Distribution of Each Discipline and Level	83
Table II-12. FSU Student Credit Hours as a Percentage of the Total State University System Credit Hours at Each Level of Each Discipline	84
SECTION III.	85
Table III-1. Average Nine and Twelve Month Salaries by College and Rank	86
Table III-2. Distribution of Faculty FTE's	96
Table III-3. 1977-78 Tenured Faculty by Department	98
Table III-4. AMOCO Awards	104
Table III-5. The FSU Distinguished Professors	106
Table III-6. Developing Scholar Awards	108
Table III-7. President's Teaching Awards for Excellence in Teaching	109
Table III-8. Committee on Faculty Research Support Awards - Summer 1978 (COFRS).	110
Table III-9. President's Club Academic Awards	111
SECTION IV	113
Table IV. Library Statistics	114

TABLE OF CONTENTS (continued)

	Page
SECTION V.	115
Table V-1. Analysis of Income: Sources of Income by Major Revenue Classification	116
Table V-2. Analysis of Expenditures: Disbursements of Funds by Major Classification	117
Table V-3. Actual Operating Expenditures	118
Table V-4. Education and General Budgeted FTE's and Dollars	119
Table V-5. E & G Expenditures from the End-of-Year Ledgers	120
Table V-6. Contract and Grant Expenditures for Academic Areas	121

SECTION I

The data in this section are related to academic programs at Florida State University.

TABLE I-1. Degrees Awarded by Schools and Colleges. This table summarizes degrees by type which have been awarded by FSU Schools and Colleges for the last six years. The summer quarter precedes the other three quarters in an academic year.

TABLE I-2. Organizational Structure of the Florida State University. This table describes the FSU organizational structure through five charts describing the major units reporting to the President and to each Vice President.

TABLE I-3. Office of Summer Sessions and Continuing Studies. This table describes activity at FSU in continuing studies programs throughout the state.

TABLE I-4. The Center for Professional Development and Public Service. This table describes educational opportunities available through the Center and summarizes the activity as related to academic divisions.

TABLE I-5. Degree Program Inventory, Major Codes and HEGIS Codes. F.S.U. degree program offerings are summarized in this table which also includes Major Codes, and HEGIS codes for each degree level. The table is in HEGIS code order.

THE FSU FACT BOOK
TABLE I-1
DEGREES AWARDED BY SCHOOLS AND COLLEGES

	1971-72	1972-73	1973-74	1974-75	1975-76	1976-77
COLLEGE OF ARTS & SCIENCES-TOTALS						
Baccalaureate Degree	695	690	804	772	671	623
Masters Degree	214	229	237	215	191	158
Doctoral Degree	152	128	137	122	128	96
COLLEGE OF BUSINESS						
Baccalaureate Degree	617	644	669	665	843	856
Masters Degree	176	158	119	94	77	80
Doctoral Degree	6	10	12	10	11	6
COLLEGE OF EDUCATION-TOTALS						
Baccalaureate Degree	879	848	814	709	613	634
Masters Degree*	329	426	405	381	368	430
Doctoral Degree	133	145	119	155	112	139
COLLEGE OF HOME ECONOMICS-TOTALS						
Baccalaureate Degree	215	225	237	263	219	233
Masters Degree	17	19	20	57	67	45
Doctoral Degree	7	10	11	5	15	11
SCHOOL OF LIBRARY SCIENCE-TOTALS						
Baccalaureate Degree	27	29	35	36	26	13
Masters Degree*	179	206	204	172	140	156
Doctoral Degree	7	6	5	11	7	7
SCHOOL OF NURSING- TOTALS						
Baccalaureate Degree	130	128	289	149	131	106

THE FSU FACT BOOK
TABLE I-1
DEGREES AWARDED BY SCHOOLS AND COLLEGES

	1971-72	1972-73	1973-74	1974-75	1975-76	1976-77
SCHOOL OF CRIMINOLOGY-TOTALS						
Baccalaureate Degree	288	262	320	281	300	317
Masters Degree	31	17	23	26	26	34
Doctoral Degree	2	3	0	4	3	3
COLLEGE OF LAW-TOTALS						
Juris Doctor Degree	150	148	181	161	129	145
COLLEGE OF SOCIAL SCIENCES-TOTALS						
Baccalaureate Degree	276	244	306	346	293	345
Masters Degree	103	114	115	142	113	186
Doctoral Degree	13	18	23	33	14	30
SCHOOL OF SOCIAL WORK-TOTALS						
Baccalaureate Degree	165	143	141	135	151	118
Masters Degree	111	82	91	104	109	124
COLLEGE OF COMMUNICATION -TOTALS						
Baccalaureate Degree	79	94	154	172	174	200
Masters Degree*	12	9	42	51	71	62
Doctoral Degree	4	9	9	12	10	14
SCHOOL OF MUSIC-TOTALS						
Baccalaureate Degree	107	112	114	117	133	107
Masters Degree	66	63	41	48	98	64
Doctoral Degree	30	27	22	16	16	9
DEPARTMENT OF DANCE-TOTALS						
Baccalaureate Degree	-	-	4	6	13	6
Masters Degree	-	-	5	5	5	4

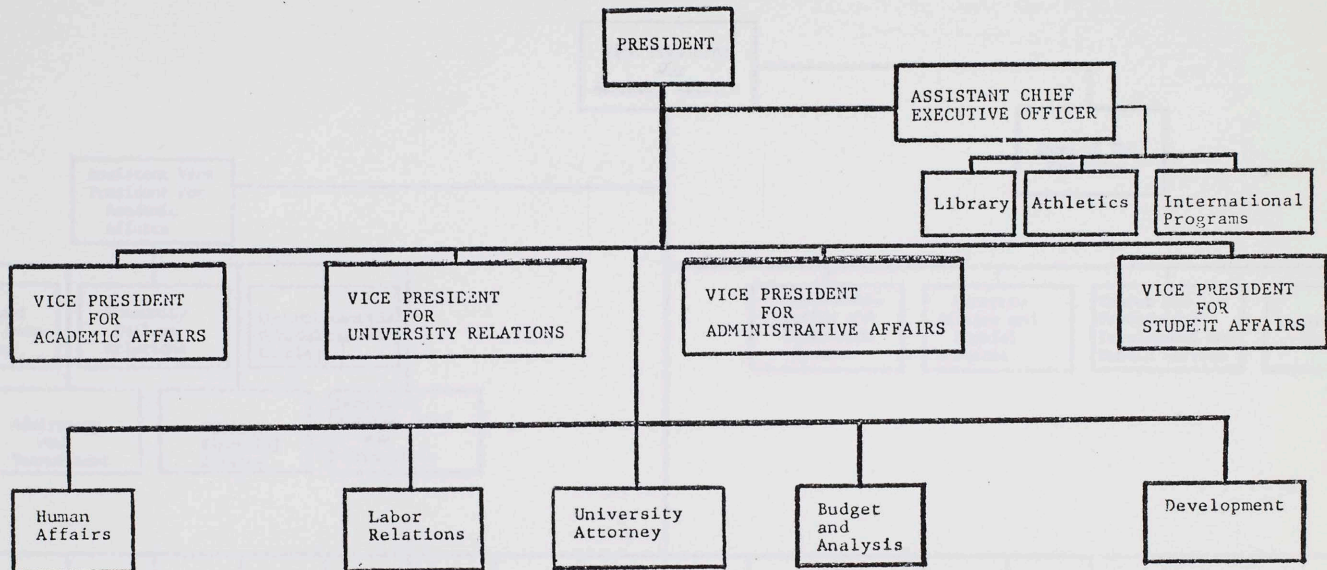
THE FSU FACT BOOK
TABLE I-1
DEGREES AWARDED BY SCHOOLS AND COLLEGES

	1971-72	1972-73	1973-74	1974-75	1975-76	1976-77
SCHOOL OF THEATRE-TOTALS						
Baccalaureate Degree	15	20	27	34	46	38
Masters Degree	10	20	34	45	41	44
Doctoral Degree	5	6	4	5	1	6
SCHOOL OF VISUAL ARTS-TOTALS						
Baccalaureate Degree	136	153	198	170	202	203
Masters Degree	38	25	31	29	54	44
Doctoral Degree	2	1	4	2	0	3
UNIVERSITY TOTALS						
Baccalaureate Degrees	3629	3592	4112	3855	3815	3799
Masters Degrees*	1286	1368	1367	1369	1360	1431
Juris Doctor Degrees	150	148	181	161	129	145
Doctoral Degrees	361	363	346	375	317	324
TOTAL	5426	5471	6006	5760	5621	5699

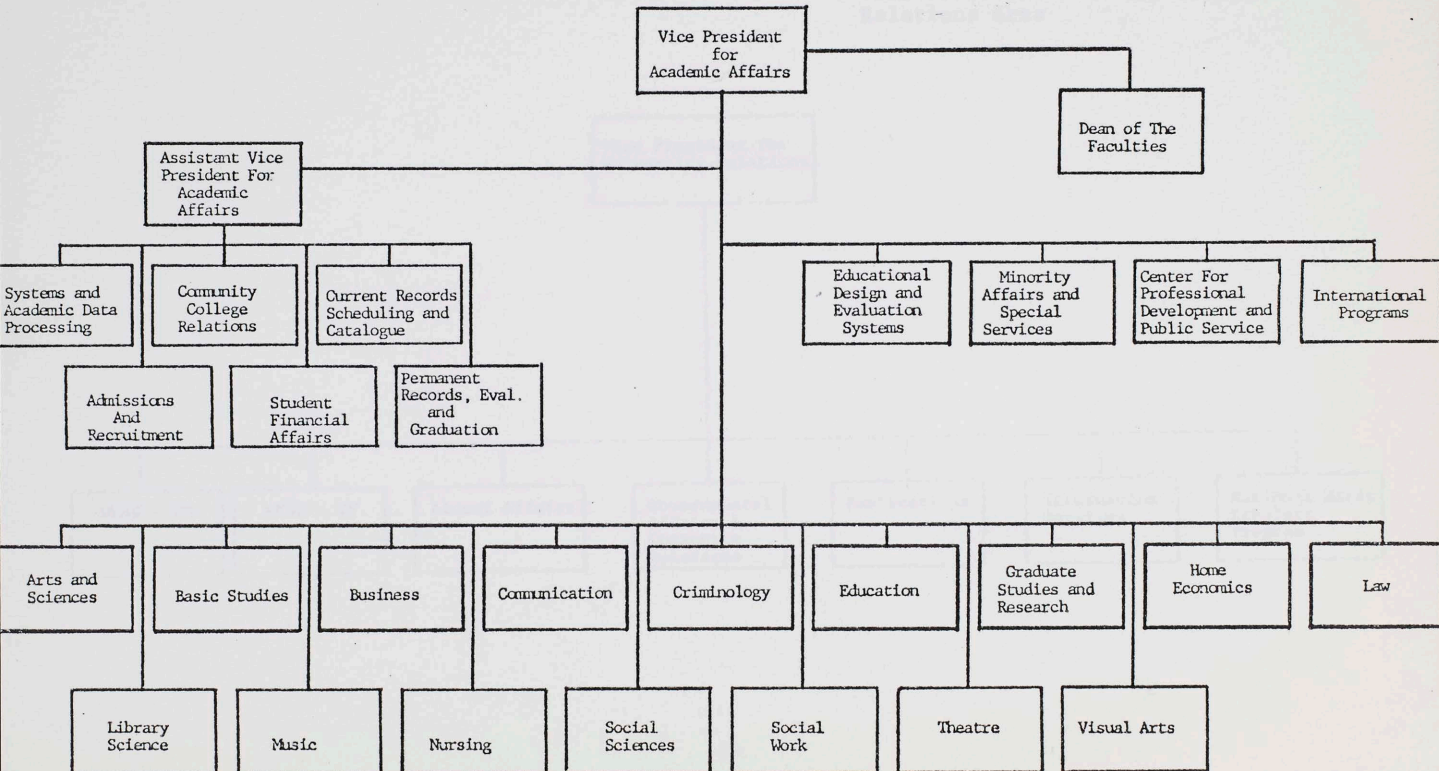
* Advanced Masters Degree Included

Source: HEGIS XII Survey; Student Data Course Files

THE FSU FACT BOOK
TABLE I-2-A
ORGANIZATIONAL STRUCTURE OF THE
FLORIDA STATE UNIVERSITY

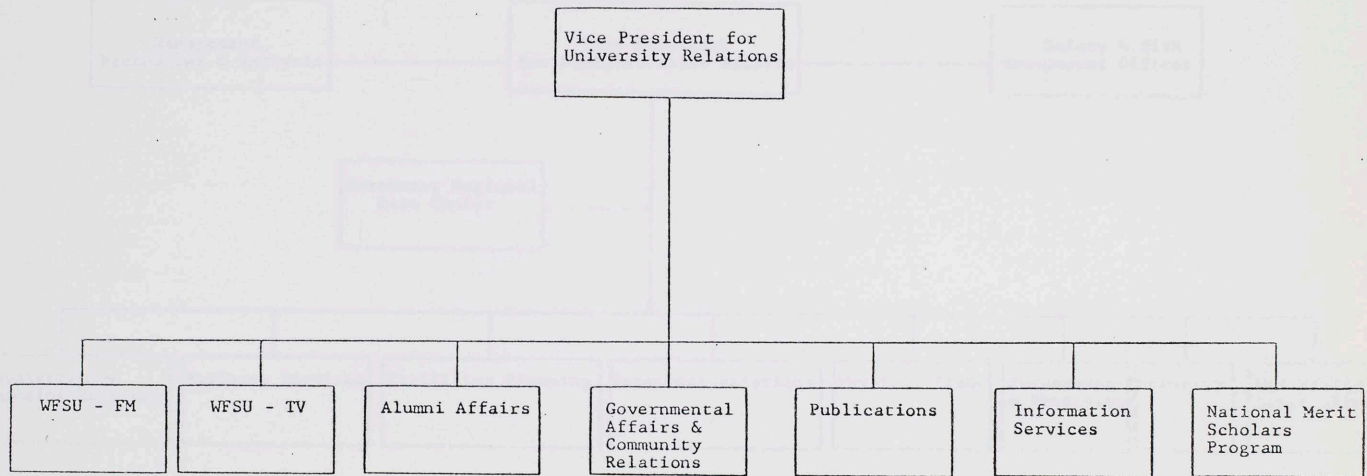


THE FSU FACT BOOK
TABLE I-2-B
ORGANIZATIONAL STRUCTURE OF THE
FLORIDA STATE UNIVERSITY



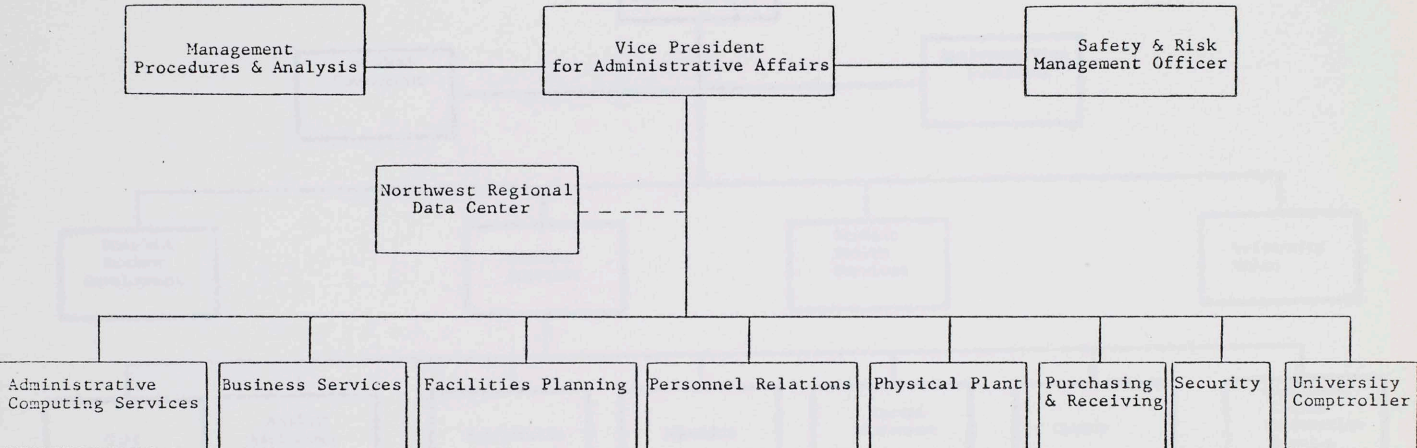
THE FSU FACT BOOK
TABLE I-2-C
ORGANIZATIONAL STRUCTURE OF THE
FLORIDA STATE UNIVERSITY

Vice President for University
Relations Area



THE FSU FACT BOOK
TABLE 1-2-D
ORGANIZATIONAL STRUCTURE OF THE
FLORIDA STATE UNIVERSITY

Vice President for
Administrative Affairs Area



THE FSU FACT BOOK
TABLE I-2-E
ORGANIZATIONAL STRUCTURE OF THE
FLORIDA STATE UNIVERSITY

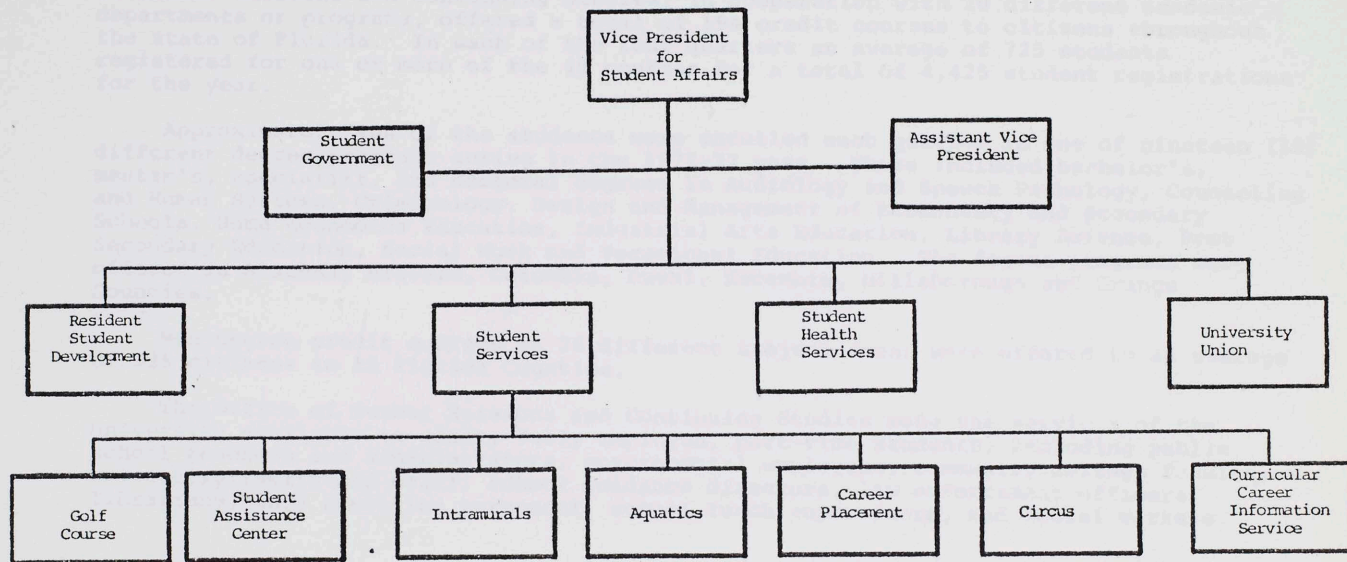


Table I-3

OFFICE OF SUMMER SESSIONS AND CONTINUING STUDIES

During the Summer, Fall, Winter, and Spring Quarters of 1976-77, the Office of Summer Sessions and Continuing Studies, in cooperation with 20 different academic departments or programs, offered a total of 194 credit courses to citizens throughout the state of Florida. In each of the four quarters an average of 725 students registered for one or more of the 49 courses for a total of 4,425 student registrations for the year.

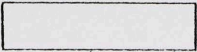
Approximately 400 of the students were enrolled each quarter in one of nineteen (19) different degree programs active in the 1976-77 year. These included bachelor's, master's, specialist, and doctoral degrees in Audiology and Speech Pathology, Counseling and Human Systems, Criminology, Design and Management of Elementary and Secondary Schools, Home Economics Education, Industrial Arts Education, Library Science, Post Secondary Education, Social Work and Vocational Education. The degree programs were offered in Alachua, Brevard, Columbia, Duval, Escambia, Hillsborough and Orange Counties.

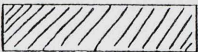
Non-degree credit courses in 20 different subject areas were offered to an average of 325 citizens in 15 Florida Counties.

The Office of Summer Sessions and Continuing Studies made the services of the University available to adult, fully employed, part-time students, including public school teachers and administrators, governmental employees, community college faculty, university family and staff, school guidance directors, law enforcement officers, librarians, navy education personnel, school lunch supervisors, and social workers.

Source: Office of Summer Session and Continuing Studies

NUMBER OF REGISTRATIONS IN OFF-CAMPUS COURSES BY QUARTERS


All Registrations


Degree Course
Registrations

Number of
Registrations

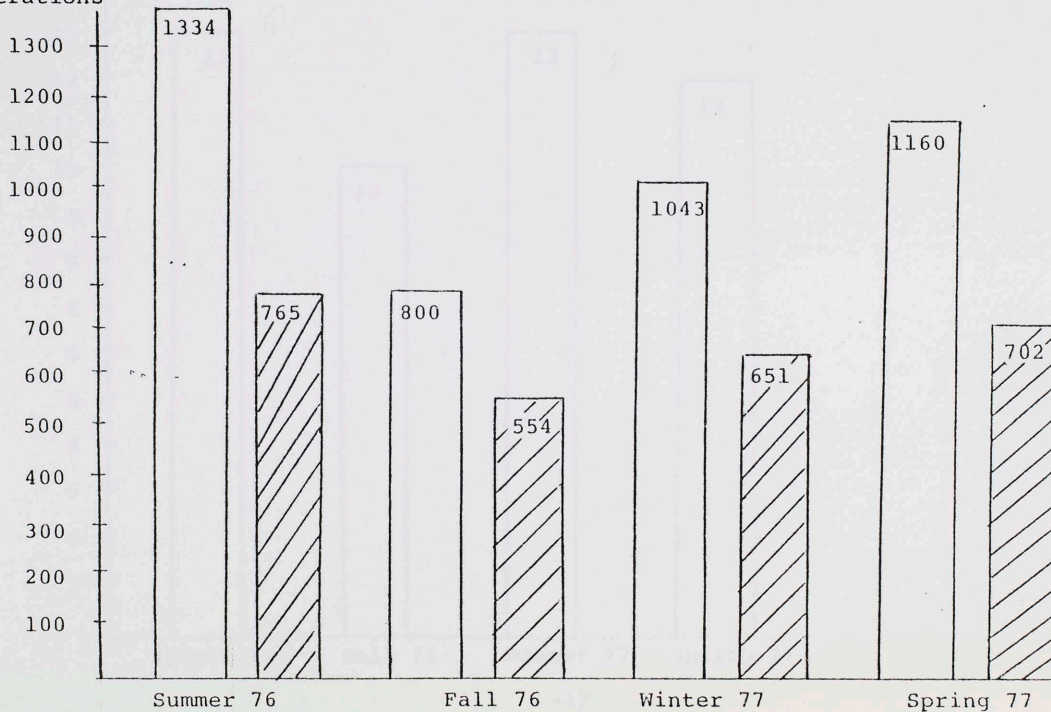
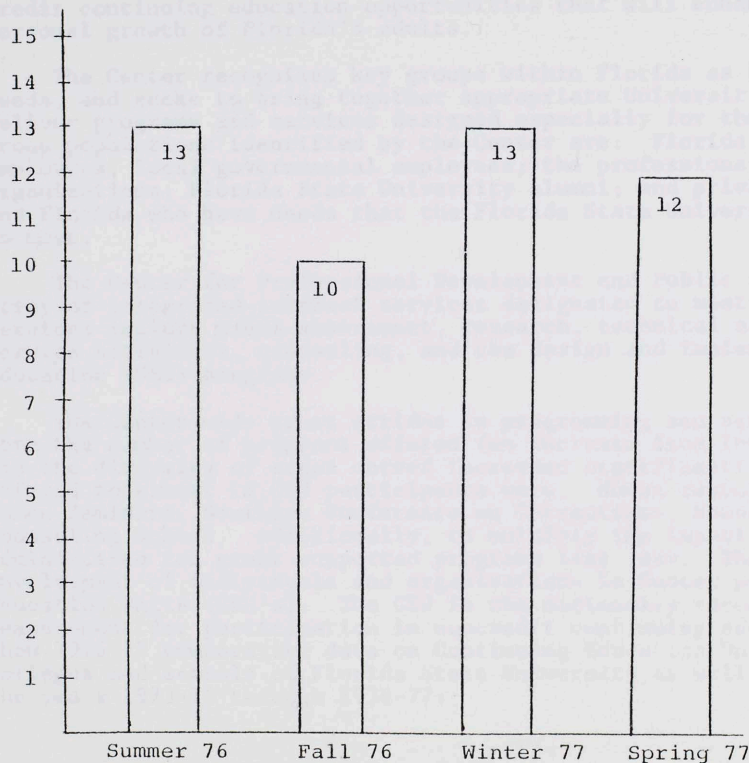


Table I-3-2

NUMBER OF DEGREE PROGRAMS EACH QUARTER



THE FSU FACT BOOK
TABLE I-4
THE CENTER FOR PROFESSIONAL DEVELOPMENT
AND PUBLIC SERVICE

The Florida State University Center for Professional Development and Public Service is deeply committed to the identification and fulfillment of the lifelong learning needs of Florida's citizens. With this commitment in mind, the Center serves as Florida State University's outreach network to provide meaningful non-credit continuing education opportunities that will enhance the professional and personal growth of Florida's adults.

The Center recognizes key groups within Florida as having specific educational needs, and seeks to bring together appropriate University resources to develop and deliver programs and services designed especially for these groups. Among the group populations identified by the Center are: Florida's state governmental employees; local governmental employees; the professions; businesses and service organizations; Florida State University alumni; and private citizens of Leon County and Florida who have needs that the Florida State University is uniquely qualified to meet.

The Center for Professional Development and Public Service has developed an array of integrated outreach services designated to meet specified needs. These services include needs assessment, research, technical assistance and public service activities, counseling, and the design and implementation of Continuing Education (CEU) programs.

The Center made great strides in programming and service efforts during 1976-77. Both the number of programs offered (an increase from 166 in 1975-76 to 282 in 1976-77) and the diversity of areas served increased significantly. Among those programs offered to almost 16,000 participants were: Human resources for the Manager, returning Women Seminars, Southern Conference on Corrections, House Spouses, and the Financial Counseling School. Additionally, to multiply the impact of tax dollars, the Center administered ten grant supported programs last year. The University recognized the involvement of individuals and organizations in Center programs by awarding Continuing Education Units (CEU's). The CEU is the nationally recognized, standard unit of measurement for participation in noncredit continuing education. The following tables show 1976-77 comparative data on Continuing Education Unit programming of the various colleges and schools of Florida State University as well as CEU programming data for the years 1973-74 through 1976-77:

TABLE I-4-1

CHART 1

TOTAL NUMBERS OF FLORIDA STATE
UNIVERSITY FACULTY INSTRUCTING
IN CEU PROGRAMS IN 1976-77

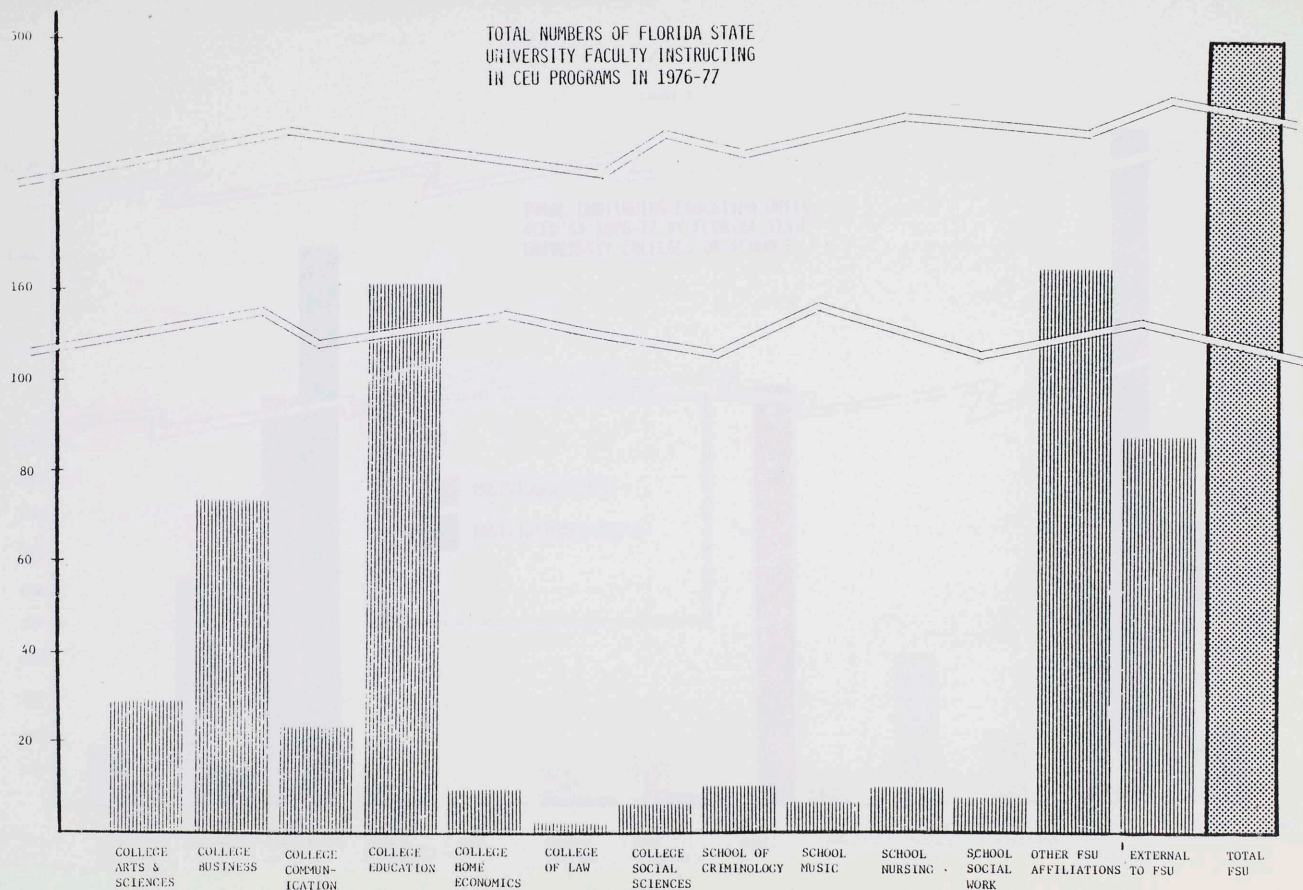
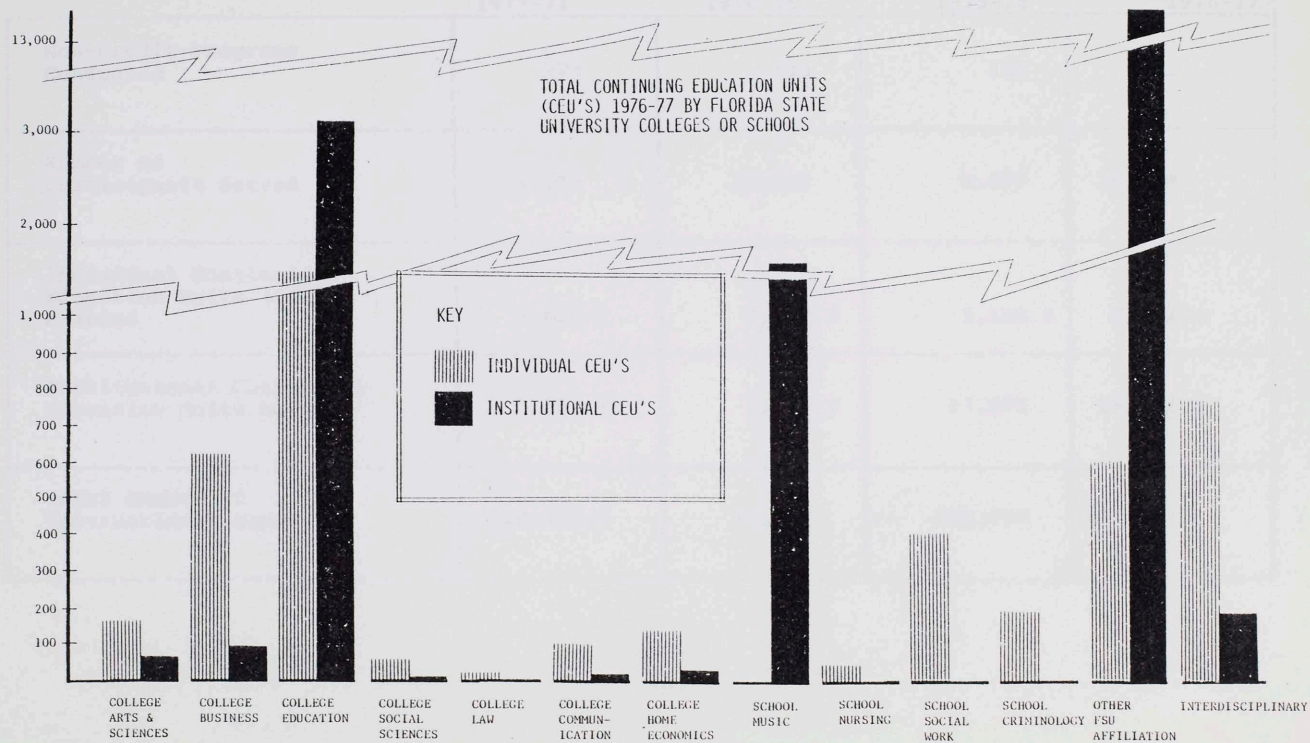


TABLE I-4-2

CHART 2



FLORIDA STATE UNIVERSITY

CENTER FOR PROFESSIONAL DEVELOPMENT AND PUBLIC SERVICE

NON-CREDIT INSTRUCTIONAL ACTIVITIES

	1973-74	1974-75	1975-76	1976-77
Non-Credit Programs Conducted	123	125	168	282
Number of Participants Served	17,345	15,508	9,087	15,709
Individual Continuing Education Units (CEU's) Awarded	6,014.6	4,381.3	5,162.8	9,502.4
Institutional Continuing Education Units Awarded	5,053.75	3,203.3	17,695	18,612.8
Total Number of Instructional Hours	110,683.5	75,846	228,778	281,152

THE F.S.U. FACT BOOK
TABLE I-5
DEGREE PROGRAM INVENTORY
MAJOR CODES AND HEGIS CODES

Major	Major Code	Bachelor	Master	Adv. Master	Hegis Code		Doctorate	Law
					Specialist			
Interior Design	422610	0203	0203	-	-	-	-	-
Urban & Regional Planning	329720	-	0206	-	-	0206	-	-
Planning	329710	-	0206	-	-	0206	-	-
Asian Studies	111710	0301	0301	-	-	-	-	-
Slavic & East European Studies	990040	0311	0311	-	-	-	-	-
Inter-American Studies	118010	0313	-	-	-	-	-	-
American Studies	110410	0319	0319	-	-	-	-	-
Biological Science	111110	0401	0401	-	-	0401	-	-
Medical Science	111127	0401	-	-	-	-	-	-
Business	211310	-	0501	-	-	0501	-	-
Business Law	211320	-	0501	-	-	0501	-	-
Accounting	210110	0502	0502	-	-	0501	-	-
Finance	214310	0504	0504	-	-	0501	-	-
Management	216610	0506	0506	-	-	0501	-	-
Hotel & Restaurant Adm.	215710	0508	-	-	-	-	-	-
Marketing	216710	0509	0509	-	-	0501	-	-
Real Estate	*216220	0511	0512	-	-	0501	-	-
Risk Mgt. - Insurance	216210	0512	0512	-	-	0501	-	-
Multinational Business Oper.	219510	0513	-	-	-	-	-	-
Pre-Law	210010	0501	-	-	-	-	-	-
Communication	410010	0601	0601	-	-	0601	-	-
Mass Communication	410011	0601	0601	-	-	0601	-	-
Speech Communication	419211	0601	0601	-	-	0601	-	-
Advertising & Public Relations	410020	0604	-	-	-	-	-	-
Elementary Education	224110	0802	0802	-	-	0802	0802	-
Higher Education	222112	-	0805	-	-	0805	0805	-
Adult Education	222111	-	0807	-	-	0807	0807	-
Special Education	226010	0808	0808	-	-	0808	0808	-

* New Major

Source: Budget and Analysis Office, F.S.U.

THE F.S.U. FACT BOOK
TABLE I-5
DEGREE PROGRAM INVENTORY
MAJOR CODES AND HEGIS CODES

<u>Major</u>	<u>Major Code</u>	<u>Bachelor</u>	<u>Master</u>	<u>Adv. Master</u>	<u>Hegis Code</u>		<u>Doctorate</u>	<u>Law</u>
					<u>Specialist</u>			
Visual Disabilities	226013	0808	0808	-	0808		0808	-
Mental Retardation	226012	0810	0810	-	0810		0810	-
Emotional Disturbances	*226014	0816	0816	-	0816		0816	-
Learning Disabilities	*226015	0818	0818	-	0818		0818	-
Education Policy, Planning & Budgeting	222511	-	0821	-	0821		0821	-
Hist., Phil., + Psy. of Ed.	222512	-	0821	-	0821		0821	-
Comparative Dev. Studies	222513	-	0821	-	0821		0821	-
Educational Psychology	222514	-	0822	-	0822		0822	-
Early Childhood Ed.	229610	0823	0823	-	0823		0823	-
Research Methods & Statistics	222411	-	0824	-	0824		0824	-
Institutional Research	222412	-	0824	-	0824		0824	-
Evaluation & Measurement	222413	-	0825	-	0825		0825	-
Counseling & Human Systems	225811	-	0826	-	0826		0826	-
Ed. Administration & Supervision	222311	-	0827	-	0827		0827	-
Management Systems	222312	-	0827	-	0827		0827	-
Instructional Systems	224011	0829	0829	-	0829		0829	-
Instructional Theory & Practice	224013	0829	0829	-	0829		0829	-
Reading Education/Language Arts	223711	0830	0830	-	0830		0830	-
Language Arts in Elem. School	223714	0830	0830	-	0830		0830	-
Art Education & Craft Design	420711	0831	0831	0831	-		0831	-
Music Education	447250	0832	0832	-	-		0832	-
Math Education	223910	0833	0833	-	0833		0833	-
Science Education	223812	0834	0834	-	0834		0834	-
Physical Education	223210	0835	0835	-	0835		0835	-
Adm. Supv. and Curriculum of P.E.	223211	0835	0835	-	0835		0835	-

* New Major

THE F.S.U. FACT BOOK
TABLE I-5
DEGREE PROGRAM INVENTORY
MAJOR CODES AND HEGIS CODES

Major	Major Code	Bachelor	Master	Adv. Master	Hegis Code		Doctorate	Law
					Specialist			
Trans. and Safety Ed.	223212	0835	0835	-	0835		0835	-
Health Education	225812	0837	0837	-	-		-	-
Comp. Vocational Ed.	222113	0839	0839	-	0839		0839	-
Industrial Arts Ed.	222910	0839	0839	-	0839		0839	-
Home Ec Education	255610	0840	0840	-	-		1301	-
Foreign Language Education	223712	0841	0841	-	0841		-	-
Rehabilitation Services	225813	0842	0842	-	0842		0842	-
Media Education	224012	-	0845	-	-		-	-
English Education	223713	0848	0848	-	0848		0848	-
Social Studies Education	223811	0855	0855	-	0855		0855	-
Exercise Physiology	223111	0856	0856	-	0856		0856	-
Motor Learning	223112	0856	0856	-	0856		0856	-
Studio Art	420610	1002	1002	-	-		-	-
History & Criticism of Art	420620	1003	1003	-	-		1003	-
Music Performance	447210	1004	1004	-	-		1004	-
Brass	447211	1004	1004	-	-		1004	-
Harp	447212	1004	1004	-	-		1004	-
Organ	447213	1004	1004	-	-		1004	-
Percussion	447214	1004	1004	-	-		1004	-
Piano	447215	1004	1004	-	-		1004	-
Strings	447216	1004	1004	-	-		1004	-
Voice	447217	1004	1004	-	-		1004	-
Woodwinds	447218	1004	1004	-	-		1004	-
Music Undecided	447299	1004	1004	-	-		1004	-
Music Literature and History	447230	1006	1006	-	-		-	-
Musicology	447271	1006	1006	-	-		-	-
Theatre	430810	1007	1007	-	-		1007	-
Dance	402810	1008	1008	-	-		-	-
Dance - Not formally admitted	402899	1008	-	-	-		-	-

THE F.S.U. FACT BOOK
TABLE I-5
DEGREE PROGRAM INVENTORY
MAJOR CODES AND HEGIS CODES

Major	Major Code	Bachelor	Master	Adv. Master	Hegis Code		Doctorate	Law
					Specialist			
Applied Design	420712	1009	1009	-	-	-	-	-
Music Composition	447220	1021	1021	-	-	1021	-	-
Music Theory	447270	1022	1022	-	-	1022	-	-
Music Therapy	447260	1028	1028	-	-	-	-	-
Opera Production	447240	-	1029	-	-	-	-	-
French	117110	1102	1102	-	-	1102	-	-
German	117120	1103	1103	-	-	-	-	-
Italian	117160	1104	-	-	-	-	-	-
Spanish	117140	1105	1105	-	-	1105	-	-
Russian	117130	1106	-	-	-	-	-	-
Latin	111930	1109	1109	-	-	-	-	-
Greek	111920	1110	1110	-	-	-	-	-
Slavic	117150	-	1115	-	-	-	-	-
Nursing	247310	1203	-	-	-	-	-	-
Audiology & Speech Pathology	418510	1220	1220	1220	-	1220	-	-
Medical Technology	111130	1223	-	-	-	-	-	-
Home Economics	250010	1301	-	-	-	1301	-	-
Clothing & Textiles	252010	1303	1303	-	-	1301	-	-
Fashion Design	252020	1303	1303	-	-	1301	-	-
Fashion Merchandising	252030	1303	1303	-	-	1301	-	-
Textiles	252040	1303	1303	-	-	1301	-	-
Home and Family Life	255310	1305	1305	-	-	1301	-	-
Family Economics	255311	1305	1305	-	-	1301	-	-
Family Relations	255312	1305	1305	-	-	1301	-	-
Child Development	255320	1305	1305	-	-	1301	-	-
Housing	255330	1305	1305	-	-	1301	-	-
Food and Nutrition	254420	1306	1306	-	-	1301	-	-
Dietetics	254410	1306	1306	-	-	1301	-	-
School Lunch Administration	254430	1306	1306	-	-	1301	-	-
Food and Nutrition Science	254440	1306	1306	-	-	1310	-	-
Marriage and Family Living	990010	-	-	-	-	-	-	-

THE F.S.U. FACT BOOK
TABLE I-5
DEGREE PROGRAM INVENTORY
MAJOR CODES AND HEGIS CODES

Major	Major Code	Bachelor	Master	Adv. Master	Hegis Code		Doctorate	Law
					Specialist			
Marriage and Family Living	990011	-	-	-	-		1310	-
Law	313410	-	-	-	-		-	1401
English	114210	1501	1501	-	-		1501	-
Linguistics	114211	1501	1501	-	-		1501	-
Literature	114212	1501	1501	-	-		1501	-
Creative Writing	114215	1501	1501	-	-		1501	-
Comparative World Lit.	119810	1503	-	-	-		-	-
Classics	111910	1504	1504	-	-		-	-
Classical Civilizations	111911	1504	1504	-	-		-	-
Greek and Latin	111915	1504	1504	-	-		-	-
Philosophy	117610	1509	1509	-	-		1509	-
Religion	118610	1510	1510	-	-		-	-
Humanities	115910	1513	1513	-	-		1513	-
Library Science	236510	1601	1601	1601	-		1601	-
Librarianship	990020	1601	-	-	-		-	-
Mathematics	116810	1701	1701	-	-		1701	-
Statistics	119310	1702	1702	-	-		1702	-
Radiation Physics	118120	1901	-	-	-		-	-
Physics	118110	1902	1902	-	-		1902	-
Ele. Particle Physics - Exper.	118111	1902	1902	-	-		1902	-
Ele. Particle Physics - Theor.	118112	1902	1902	-	-		1902	-
Infrared Physics & Mol. Structure	118113	1902	1902	-	-		1902	-
Low Energy Nuclear Physics - Exper.	118114	1902	1902	-	-		1902	-
Low Energy Nuclear Physics - Theor.	118115	1902	1902	-	-		1902	-
Molecular Scattering - Phys.								
Pedagogy	118116	1902	1902	-	-		1902	-
Solid State Physics - Exper.	118117	1902	1902	-	-		1902	-
Solid State Physics - Theoretical	118118	1902	1902	-	-		1902	-
Theoretical Physics	118119	1902	1902	-	-		1902	-
Chemistry	111610	1905	1905	-	-		1905	-

THE F.S.U. FACT BOOK
TABLE I-5
DEGREE PROGRAM INVENTORY
MAJOR CODES AND HEGIS CODES

Major	Major Code	Bachelor	Master	Adv. Master	Hegis Code		Doctorate	Law	None
					Specialist				
Analytical Chemistry	111611	1905	1905	-	-		1905	-	
Biochemistry	111612	1905	1905	-	-		1905	-	
Inorganic Chemistry	111613	1905	1905	-	-		1905	-	
Nuclear Chemistry	111614	1905	1905	-	-		1905	-	
Organic Chemistry	111615	1905	1905	-	-		1905	-	
Physical Chemistry	111616	1905	1905	-	-		1905	-	
Meteorology	116910	1913	1913	-	-		1913	-	
Geology	114710	1914	1914	-	-		1914	-	
Oceanography	116110	-	1919	-	-		1919	-	
Biological Oceanography	116111	-	1919	-	-		1919	-	
Chemical Oceanography	116112	-	1919	-	-		1919	-	
Geological Oceanography	116113	-	1919	-	-		1919	-	
Physical Oceanography	116114	-	1919	-	-		1919	-	
Chemical Physics	117810	-	1927	-	-		1927	-	
Geophysical Fluid Dynamics	117510	-	-	-	-		1930	-	
Molecular Biophysics	117710	-	-	-	-		1931	-	
Chemical Science	111620	1943	-	-	-		-	-	
Psychology	118410	2001	2001	-	-		2001	-	
General Exp. Psychology	118411	2001	2001	-	-		2001	-	
Clinical Psychology	118412	2001	2001	-	-		2001	-	
School Psychology	118413	2001	2001	-	-		2001	-	
Public Administration	325110	-	2102	-	-		2207	-	
Leisure Services and Studies	227910	2103	2103	-	-		-	-	
Social Work	338910	2104	2104	-	-		2104	-	
Criminology	349410	2105	2105	-	-		2105	-	
Social Science	328810	2201	2201	-	-		-	-	
Anthropology	110510	2202	2202	-	-		2202	-	
Archaeology	110511	2202	2202	-	-		-	-	
Economics	322210	2204	2204	-	-		2204	-	
History	115210	2205	2205	-	-		2205	-	
Geography	324610	2206	2206	-	-		-	-	
Government	324910	2207	2207	-	-		2207	-	

THE F.S.U. FACT BOOK
TABLE I-5
DEGREE PROGRAM INVENTORY
MAJOR CODES AND HEGIS CODES

<u>Major</u>	<u>Major Code</u>	<u>Bachelor</u>	<u>Master</u>	<u>Adv. Master</u>	<u>Hegis Code</u>		<u>Doctorate</u>	<u>Law</u>	<u>None</u>
					<u>Specialist</u>				
Sociology	329010	2208	2208	-	-		2208	-	
International Affairs	329910	2210	2210	-	-		-	-	
Undecided	920001	0000	-	-	-		-	-	0000
Special Student	920002	-	-	-	-		-	-	0000

SECTION II

The data in this section are student related.

TABLE II-1 State Fundable Student Credit Hours by School and Department-Fall Quarters. This table reports state fundable student credit hours by department by course level for the quarters Fall 1973, Fall 1974, Fall 1975, Fall 1976, and Fall 1977. Lower level student credit hours include hours generated by courses numbered 299 and below. Upper level student credit hours include those generated by 300 and 400 level courses. Graduate credit hours include hours generated by courses numbered 500 and above. Student FTE (full-time equivalent) can be calculated by dividing lower and upper level student credit hours by a factor of 15 and graduate level credit hours by a factor of 12.

TABLE II-2. State Fundable Student Credit Hours by School and Department-Four Quarter Average. This table reports four quarter average student credit hours (state fundable) for the years 1973-74, 1974-75, 1975-76, and 1976-77. The summer quarter precedes the other three in an academic year.

TABLE II-3. Geographical Origin of FSU Students by Florida County, Fall 1977. This table summarizes by county the number of students who indicated a Florida county as their home of record in the Fall Quarter 1977.

TABLE II-4. Florida Community/Junior College Student Transferring to FSU, Fall Quarters. This table summarizes the number of students transferring to FSU from state community and junior colleges for the Fall quarters of 1974 through 1977. Also given is the percentage contributed by each college each year.

TABLE II-5. U.S. Sources of FSU Enrollment, Fall, 1977. This table summarizes by state the number of students who indicated a state of residence as their home of record in the Fall Quarter 1977.

TABLE II-6. Student Profile. This table describes the student body for Fall 1977 by sex, race, residency, level, and college or classification.

TABLE II-7. Rank Order of Undergraduate Majors at FSU, Fall 1977. This table lists in descending order of major the number of undergraduate students indicating a specific major area of study on the Fall 1977 (Preliminary) Student Data Course File.

TABLE II-8. Rank Order of Graduate Majors at FSU, Fall 1977. This table lists in descending order of major the number of graduate students indicating a specific major area of study on this Fall 1977 (Preliminary) Student Data Course File.

TABLE II-9. Fall Quarter, 1977--National Sources of Students. This table lists the countries indicated as the home residence by students during the Fall Quarter 1977 for all nations named by ten or more students.

TABLE II-10. Percentage Distribution of FSU Credit Hours by Level, 1976-77. This table gives the distribution of credit hours by level and discipline at FSU. From this table it can be determined that the Mathematics discipline produced 9.40 percent of the lower level credit hours, 4.05 percent of the upper level credit hours, and 5.26 percent of all FSU student credit hours for 1976-77.

TABLE II-11. FSU Credit Hour Distribution of Each Discipline and Level. This table describes the percentage of total student credit hours taken at FSU in the academic year 1976-77 at each level of each discipline and the total discipline percentage.

TABLE 11-12. FSU Student Credit Hours as a Percentage of the Total State University System Credit Hours at Each Level of Each Discipline, 1976-77. This table compares the number of credit hours produced at FSU in each discipline, at each level with the total number produced in the same discipline and level in the State University System, during the 1976-77 academic year. For example, this table indicates what percentage of the total State University System lower level education credit hours were produced at FSU during the academic year, 1976-77.

THE FSU FACT BOOK
TABLE II-1
STATE FUNDABLE
STUDENT CREDIT HOUR ENROLLMENT BY SCHOOL AND COLLEGE
FALL QUARTERS

	<u>1973</u>	<u>1974</u>	<u>1975</u>	<u>1976</u>	<u>1977</u>
COLLEGE OF ARTS AND SCIENCES					
Anthropology					
Lower	2163	1908	1836	1449	1407
Upper	1400	1533	1314	1108	1221
Graduate	354	268	240	237	208
Total	<u>3917</u>	<u>3709</u>	<u>3390</u>	<u>2794</u>	<u>2836</u>
Biological Sciences					
Lower	4242	4275	3547	4889	4664
Upper	4084	4578	3541	3355	2778
Graduate	1562	1152	1216	1107	1350
Total	<u>9888</u>	<u>10005</u>	<u>8304</u>	<u>9351</u>	<u>8792</u>
Chemistry					
Lower	4821	4448	4370	4465	4450
Upper	1879	2031	2142	1756	1516
Graduate	1048	1033	935	954	892
Total	<u>7748</u>	<u>7512</u>	<u>7447</u>	<u>7175</u>	<u>6858</u>
Classical Lang. & Lit.					
Classical Civ. & Lit.					
Lower	297	447	258	276	192
Upper	501	411	579	771	801
Graduate	108	84	52	72	68
Total	<u>906</u>	<u>942</u>	<u>889</u>	<u>1119</u>	<u>1061</u>

THE FSU FACT BOOK
TABLE II-1
STATE FUNDABLE
STUDENT CREDIT HOUR ENROLLMENT BY SCHOOL AND COLLEGE
FALL QUARTERS

	<u>1973</u>	<u>1974</u>	<u>1975</u>	<u>1976</u>	<u>1977</u>
Classics					
Lower	0	0	0	27	60
Upper	0	45	0	36	0
Graduate	39	31	8	17	8
Total	<u>39</u>	<u>76</u>	<u>8</u>	<u>80</u>	<u>68</u>
Greek					
Lower	120	132	144	123	150
Upper	15	21	9	15	6
Graduate	21	15	12	9	6
Total	<u>156</u>	<u>168</u>	<u>165</u>	<u>147</u>	<u>162</u>
Latin					
Lower	246	294	207	246	189
Upper	84	72	116	61	37
Graduate	30	18	9	12	3
Total	<u>360</u>	<u>384</u>	<u>332</u>	<u>319</u>	<u>229</u>
Classical Lang. & Lit. Totals					
Lower	663	873	609	672	591
Upper	600	549	704	883	844
Graduate	198	148	81	110	85
Total	<u>1461</u>	<u>1570</u>	<u>1394</u>	<u>1665</u>	<u>1520</u>
English					
Lower	7036	8185	8019	8666	8680
Upper	3917	3713	3641	3088	2791
Graduate	1110	908	821	609	750
Total	<u>12063</u>	<u>12806</u>	<u>12481</u>	<u>12363</u>	<u>12221</u>

THE FSU FACT BOOK
TABLE II-1
STATE FUNDABLE
STUDENT CREDIT HOUR ENROLLMENT BY SCHOOL AND COLLEGE
FALL QUARTERS

	<u>1973</u>	<u>1974</u>	<u>1975</u>	<u>1976</u>	<u>1977</u>
Geology					
Lower	2532	2795	1903	1570	1006
Upper	295	215	244	269	207
Graduate	292	364	299	251	353
Total	<u>3119</u>	<u>3374</u>	<u>2446</u>	<u>2090</u>	<u>1566</u>
History					
Lower	7479	7665	7446	7200	8466
Upper	4646	4456	4301	4367	2964
Graduate	1195	1060	870	683	670
Total	<u>13320</u>	<u>13181</u>	<u>12617</u>	<u>12250</u>	<u>12100</u>
Humanities					
Lower	3657	3912	3348	3039	2751
Upper	240	156	78	114	114
Graduate	262	213	189	127	183
Total	<u>4159</u>	<u>4281</u>	<u>3615</u>	<u>3280</u>	<u>3048</u>
Mathematics					
Lower	9912	9877	10424	8580	8970
Upper	1310	1040	1036	3414	3561
Graduate	814	622	420	422	599
Total	<u>12036</u>	<u>11539</u>	<u>11880</u>	<u>12416</u>	<u>13130</u>
Meteorology					
Lower	1690	1696	1497	1662	1599
Upper	480	571	305	455	396
Graduate	527	376	487	451	355
Total	<u>2697</u>	<u>2643</u>	<u>2289</u>	<u>2568</u>	<u>2350</u>

THE FSU FACT BOOK
TABLE II-1
STATE FUNDABLE
STUDENT CREDIT HOUR ENROLLMENT BY SCHOOL AND COLLEGE
FALL QUARTERS

	<u>1973</u>	<u>1974</u>	<u>1975</u>	<u>1976</u>	<u>1977</u>
Modern Languages					
Chinese					
Lower	165	116	88	70	30
Upper	12	24	39	36	15
Graduate	39	41	40	30	6
Total	<u>216</u>	<u>181</u>	<u>167</u>	<u>136</u>	<u>51</u>
Czechoslovakian					
Lower	0	0	0	0	0
Upper	0	0	0	0	0
Graduate	0	0	0	0	0
Total	<u>0</u>	<u>0</u>	<u>0</u>	<u>0</u>	<u>0</u>
French					
Lower	3164	2751	2443	2502	2291
Upper	342	267	213	270	225
Graduate	245	162	211	200	145
Total	<u>3751</u>	<u>3180</u>	<u>2867</u>	<u>2972</u>	<u>2661</u>
German					
Lower	2078	1812	1753	1681	1488
Upper	210	117	150	192	138
Graduate	102	134	138	95	102
Total	<u>2390</u>	<u>2063</u>	<u>2041</u>	<u>1968</u>	<u>1728</u>
Italian					
Lower	1204	712	810	550	698
Upper	75	126	75	90	90
Graduate	30	36	31	24	9
Total	<u>1309</u>	<u>874</u>	<u>916</u>	<u>664</u>	<u>797</u>

THE FSU FACT BOOK
TABLE II-1
STATE FUNDABLE
STUDENT CREDIT HOUR ENROLLMENT BY SCHOOL AND COLLEGE
FALL QUARTERS

	<u>1973</u>	<u>1974</u>	<u>1975</u>	<u>1976</u>	<u>1977</u>
Japanese					
Lower	119	104	74	55	69
Upper	0	0	0	0	12
Graduate	0	0	0	3	0
Total	<u>119</u>	<u>104</u>	<u>74</u>	<u>58</u>	<u>81</u>
Modern Languages					
Lower	102	106	64	99	54
Upper	102	138	72	21	117
Graduate	297	113	76	3	21
Total	<u>501</u>	<u>357</u>	<u>212</u>	<u>123</u>	<u>192</u>
Portuguese					
Lower	10	34	0	75	5
Upper	0	0	0	0	3
Graduate	0	0	6	0	0
Total	<u>10</u>	<u>34</u>	<u>6</u>	<u>75</u>	<u>8</u>
Russian					
Lower	489	336	413	276	207
Upper	105	75	48	90	105
Graduate	56	75	39	15	9
Total	<u>650</u>	<u>486</u>	<u>500</u>	<u>381</u>	<u>321</u>
Serbo-Croatian					
Lower	6	15	6	0	21
Upper	0	3	3	0	0
Graduate	6	6	0	0	3
Total	<u>12</u>	<u>24</u>	<u>9</u>	<u>0</u>	<u>24</u>

THE FSU FACT BOOK
TABLE II-1
STATE FUNDABLE
STUDENT CREDIT HOUR ENROLLMENT BY SCHOOL AND COLLEGE
FALL QUARTERS

	<u>1973</u>	<u>1974</u>	<u>1975</u>	<u>1976</u>	<u>1977</u>
Slavic					
Lower	0	0	0	0	0
Upper	0	0	0	0	21
Graduate	16	0	6	0	0
Total	<u>16</u>	<u>0</u>	<u>6</u>	<u>0</u>	<u>21</u>
Spanish					
Lower	4063	3580	3302	3468	3426
Upper	570	543	465	409	420
Graduate	239	197	157	173	168
Total	<u>4872</u>	<u>4320</u>	<u>3924</u>	<u>4050</u>	<u>4014</u>
Linguistics					
Lower	0	0	0	0	4
Upper	0	0	0	36	72
Graduate	0	0	0	15	24
Total	<u>0</u>	<u>0</u>	<u>0</u>	<u>51</u>	<u>100</u>
Modern Lang. Totals					
Lower	11400	9566	8953	8776	8293
Upper	1416	1293	1065	1144	1218
Graduate	1030	764	704	558	487
Total	<u>13846</u>	<u>11623</u>	<u>10722</u>	<u>10478</u>	<u>9998</u>
Oceanography					
Lower	102	0	438	1032	729
Upper	111	0	0	3	6
Graduate	784	532	420	572	447
Total	<u>997</u>	<u>532</u>	<u>858</u>	<u>1607</u>	<u>1182</u>

THE FSU FACT BOOK
TABLE II-1
STATE FUNDABLE
STUDENT CREDIT HOUR ENROLLMENT BY SCHOOL AND COLLEGE
FALL QUARTERS

	<u>1973</u>	<u>1974</u>	<u>1975</u>	<u>1976</u>	<u>1977</u>
Philosophy					
Lower	912	880	800	824	573
Upper	695	607	581	503	385
Graduate	360	278	347	287	272
Total	<u>1967</u>	<u>1765</u>	<u>1728</u>	<u>1614</u>	<u>1230</u>
Physics					
Lower	3190	3224	2973	2807	2536
Upper	1159	1345	1308	1364	1161
Graduate	847	535	590	484	526
Total	<u>5196</u>	<u>5104</u>	<u>4871</u>	<u>4655</u>	<u>4223</u>
Psychology					
Lower	4755	4884	5118	5223	4812
Upper	9026	7339	7517	6487	6399
Graduate	2000	1904	1608	1207	1300
Total	<u>15781</u>	<u>14127</u>	<u>14243</u>	<u>12917</u>	<u>12511</u>
Religion					
Lower	2410	2645	2249	2102	1305
Upper	1248	819	574	508	401
Graduate	255	402	267	154	248
Total	<u>3913</u>	<u>3866</u>	<u>3090</u>	<u>2764</u>	<u>1954</u>
Statistics					
Lower	0	0	0	0	0
Upper	1460	1899	1966	1908	2020
Graduate	697	804	936	809	839
Total	<u>2157</u>	<u>2703</u>	<u>2902</u>	<u>2717</u>	<u>2859</u>

THE FSU FACT BOOK
TABLE II-1
STATE FUNDABLE
STUDENT CREDIT HOUR ENROLLMENT BY SCHOOL AND COLLEGE
FALL QUARTERS

	<u>1973</u>	<u>1974</u>	<u>1975</u>	<u>1976</u>	<u>1977</u>
Geophysical Fluid Dynamics					
Lower	0	0	0	0	0
Upper	0	0	0	0	0
Graduate	107	48	36	31	29
Total	<u>107</u>	<u>48</u>	<u>36</u>	<u>31</u>	<u>29</u>
Molecular Biophysics					
Lower	0	0	0	0	0
Upper	0	0	0	0	0
Graduate	187	187	129	155	138
Total	<u>187</u>	<u>187</u>	<u>129</u>	<u>155</u>	<u>138</u>
American Studies					
Lower	0	0	0	0	0
Upper	345	357	45	81	270
Graduate	19	21	9	1	21
Total	<u>364</u>	<u>378</u>	<u>54</u>	<u>82</u>	<u>291</u>
Asian Studies					
Lower	0	0	0	0	0
Upper	0	0	0	18	3
Graduate	67	51	59	38	32
Total	<u>67</u>	<u>51</u>	<u>59</u>	<u>56</u>	<u>35</u>
Chemical Physics					
Lower	0	0	0	0	0
Upper	0	0	0	0	0
Graduate	0	0	0	0	0
Total	<u>0</u>	<u>0</u>	<u>0</u>	<u>0</u>	<u>0</u>

THE FSU FACT BOOK
TABLE II-1
STATE FUNDABLE
STUDENT CREDIT HOUR ENROLLMENT BY SCHOOL AND COLLEGE
FALL QUARTERS

	<u>1973</u>	<u>1974</u>	<u>1975</u>	<u>1976</u>	<u>1977</u>
Inter-American Studies					
Lower	0	0	0	0	0
Upper	0	0	0	0	0
Graduate	0	0	0	0	0
Total	<u>0</u>	<u>0</u>	<u>0</u>	<u>0</u>	<u>0</u>
Honors					
Lower	222	126	54	0	171
Upper	0	0	0	0	0
Graduate	0	0	0	0	0
Total	<u>222</u>	<u>126</u>	<u>54</u>	<u>0</u>	<u>171</u>
Comparative World Literature					
Lower	0	0	0	0	0
Upper	0	27	36	15	6
Graduate	0	0	0	0	0
Total	<u>0</u>	<u>27</u>	<u>36</u>	<u>15</u>	<u>6</u>
College of Arts and Sciences - Totals					
Lower	67186	66959	63584	62956	61003
Upper	34311	32528	30398	30840	28261
Graduate	13715	11670	10663	9247	9784
Total	<u>115212</u>	<u>111157</u>	<u>104645</u>	<u>103043</u>	<u>99048</u>

THE FSU FACT BOOK
TABLE II-1
STATE FUNDABLE
STUDENT CREDIT HOUR ENROLLMENT BY SCHOOL AND COLLEGE
FALL QUARTERS

	<u>1973</u>	<u>1974</u>	<u>1975</u>	<u>1976</u>	<u>1977</u>
COLLEGE OF BUSINESS					
Accounting					
Lower	0	0	0	0	0
Upper	4239	5324	6226	5504	5573
Graduate	220	230	190	200	150
Total	<u>4459</u>	<u>5554</u>	<u>6416</u>	<u>5704</u>	<u>5723</u>
Business Administration					
Lower	2900	3120	3232	2707	3051
Upper	11165	11724	12686	13168	14221
Graduate	2808	2410	2289	1911	1942
Total	<u>16873</u>	<u>17254</u>	<u>18207</u>	<u>17786</u>	<u>19214</u>
Business Teacher Education					
Lower	537	351	270	0	0
Upper	362	344	404	0	0
Graduate	0	0	0	0	0
Total	<u>899</u>	<u>695</u>	<u>674</u>	<u>0</u>	<u>0</u>

THE FSU FACT BOOK
TABLE II-1
STATE FUNDABLE
STUDENT CREDIT HOUR ENROLLMENT BY SCHOOL AND COLLEGE
FALL QUARTERS

	<u>1973</u>	<u>1974</u>	<u>1975</u>	<u>1976</u>	<u>1977</u>
Business Law					
Lower	0	0	0	0	0
Upper	573	798	675	656	544
Graduate	0	0	0	0	0
Total	<u>573</u>	<u>798</u>	<u>675</u>	<u>656</u>	<u>544</u>
Finance					
Lower	0	0	0	0	0
Upper	873	844	1024	1174	1164
Graduate	0	0	0	0	0
Total	<u>873</u>	<u>844</u>	<u>1024</u>	<u>1174</u>	<u>1164</u>
Hotel and Restaurant Administration					
Lower	0	0	0	0	0
Upper	1534	1477	1676	1767	1739
Graduate	0	0	0	0	0
Total	<u>1534</u>	<u>1477</u>	<u>1676</u>	<u>1767</u>	<u>1739</u>
Risk & Insurance					
Lower	0	0	0	0	0
Upper	348	1124	1200	1572	1728
Graduate	0	0	0	0	0
Total	<u>348</u>	<u>1124</u>	<u>1200</u>	<u>1572</u>	<u>1728</u>
Management					
Lower	0	0	0	0	0
Upper	1408	1220	1184	1304	1376
Graduate	0	0	0	0	0
Total	<u>1408</u>	<u>1220</u>	<u>1184</u>	<u>1304</u>	<u>1376</u>

THE FSU FACT BOOK
TABLE II-1
STATE FUNDABLE
STUDENT CREDIT HOUR ENROLLMENT BY SCHOOL AND COLLEGE
FALL QUARTERS

	<u>1973</u>	<u>1974</u>	<u>1975</u>	<u>1976</u>	<u>1977</u>
Marketing					
Lower	0	0	0	0	0
Upper	1368	1456	1512	1760	2068
Graduate	0	0	0	0	0
Total	<u>1368</u>	<u>1456</u>	<u>1512</u>	<u>1760</u>	<u>2068</u>
Office Management					
Lower	0	0	0	0	0
Upper	119	173	126	0	0
Graduate	0	0	0	0	0
Total	<u>119</u>	<u>173</u>	<u>126</u>	<u>0</u>	<u>0</u>
Multi-national					
Business Operations					
Lower	0	0	0	0	0
Upper	208	172	256	204	356
Graduate	0	0	0	0	0
Total	<u>208</u>	<u>172</u>	<u>256</u>	<u>204</u>	<u>356</u>
College of Business Totals					
Lower	3437	3471	3502	2707	3051
Upper	22197	24656	26969	27109	28769
Graduate	3028	2640	2479	2111	2092
Total	<u>28662</u>	<u>30767</u>	<u>32950</u>	<u>31927</u>	<u>33912</u>

THE FSU FACT BOOK
TABLE II-1
STATE FUNDABLE
STUDENT CREDIT HOUR ENROLLMENT BY SCHOOL AND COLLEGE
FALL QUARTERS

	<u>1973</u>	<u>1974</u>	<u>1975</u>	<u>1976</u>	<u>1977</u>
COLLEGE OF EDUCATION					
Area of Ed. Mgt. Systems Totals					
Lower	336	0	0	0	0
Upper	2649	3150	3088	2679	2155
Graduate	5916	6171	5829	4923	5093
Total	<u>8901</u>	<u>9321</u>	<u>8917</u>	<u>7602</u>	<u>7248</u>
Area of Instructional Design and Personnel Development Totals					
Lower	0	16	32	58	0
Upper	7310	9467	8932	9234	7531
Graduate	2975	2864	2798	2160	2448
Total	<u>10285</u>	<u>12347</u>	<u>11762</u>	<u>11452</u>	<u>9979</u>
Area of Professional and Clinical Programs Totals					
Lower	2176	1557	1431	1264	939
Upper	10863	8531	8438	8889	8877
Graduate	3370	3236	3110	2708	2777
Total	<u>16409</u>	<u>13324</u>	<u>12979</u>	<u>12861</u>	<u>12593</u>
College of Education Totals					
Lower	2512	1573	1463	1322	939
Upper	20822	21148	20458	20802	18563
Graduate	12261	12271	11737	9791	10318
Total	<u>35595</u>	<u>34992</u>	<u>33658</u>	<u>31915</u>	<u>29820</u>

THE FSU FACT BOOK
TABLE II-1
STATE FUNDABLE
STUDENT CREDIT HOUR ENROLLMENT BY SCHOOL AND COLLEGE
FALL QUARTERS

	<u>1973</u>	<u>1974</u>	<u>1975</u>	<u>1976</u>	<u>1977</u>
COLLEGE OF HOME ECONOMICS					
Clothing and Textiles					
Lower	1003	1245	1222	1264	1155
Upper	1358	1549	2032	1801	2051
Graduate	54	121	82	59	91
Total	<u>2415</u>	<u>2915</u>	<u>3336</u>	<u>3124</u>	<u>3297</u>
Food and Nutrition					
Lower	871	1172	1125	916	368
Upper	879	837	1075	1264	1137
Graduate	121	130	95	147	181
Total	<u>1871</u>	<u>2139</u>	<u>2295</u>	<u>2327</u>	<u>2186</u>
Home and Family Life					
Lower	0	0	0	0	0
Upper	3606	2937	2759	2775	2664
Graduate	397	379	399	487	549
Total	<u>4003</u>	<u>3316</u>	<u>3158</u>	<u>3262</u>	<u>3213</u>
Home Economics Education					
Lower	0	0	0	0	0
Upper	595	666	826	739	758
Graduate	330	309	279	211	84
Total	<u>925</u>	<u>975</u>	<u>1105</u>	<u>950</u>	<u>842</u>
General Home Economics					
Lower	0	0	0	0	0
Upper	105	380	0	0	0
Graduate	45	75	0	0	0
Total	<u>150</u>	<u>455</u>	<u>0</u>	<u>0</u>	<u>0</u>

THE FSU FACT BOOK
TABLE II-1
STATE FUNDABLE
STUDENT CREDIT HOUR ENROLLMENT BY SCHOOL AND COLLEGE
FALL QUARTERS

	<u>1973</u>	<u>1974</u>	<u>1975</u>	<u>1976</u>	<u>1977</u>
College of Home Economics					
Lower	1874	2417	2347	2180	2023
Upper	6543	6369	6692	6579	6610
Graduate	<u>947</u>	<u>1014</u>	<u>855</u>	<u>904</u>	<u>905</u>
Totals	9364	9800	9894	9663	9538
SCHOOL OF LIBRARY SCIENCE					
Lower	189	144	83	73	43
Upper	980	1004	693	628	452
Graduate	<u>1943</u>	<u>1832</u>	<u>1770</u>	<u>1688</u>	<u>1354</u>
Totals	3112	2980	2546	2389	1849
SCHOOL OF NURSING					
Lower	0	0	0	0	0
Upper	5525	3758	3703	3318	3487
Graduate	<u>0</u>	<u>0</u>	<u>0</u>	<u>0</u>	<u>0</u>
Totals	5525	3758	3703	3318	3487
SCHOOL OF CRIMINOLOGY					
Lower	0	0	0	2	6
Upper	5965	6154	6550	7006	6633
Graduate	<u>682</u>	<u>1091</u>	<u>1099</u>	<u>957</u>	<u>846</u>
Totals	6647	7245	7649	7965	7485

THE FSU FACT BOOK
TABLE II-1
STATE FUNDABLE
STUDENT CREDIT HOUR ENROLLMENT BY SCHOOL AND COLLEGE
FALL QUARTERS

	<u>1973</u>	<u>1974</u>	<u>1975</u>	<u>1976</u>	<u>1977</u>
COLLEGE OF LAW					
Lower	0	0	0	0	0
Upper	0	0	0	0	0
Graduate	6749	6346	6668	6952	7758
Total	<u>6749</u>	<u>6346</u>	<u>6668</u>	<u>6952</u>	<u>7758</u>
COLLEGE OF SOCIAL SCIENCES					
Economics					
Lower	4115	4227	4860	4092	5409
Upper	843	1038	1100	914	1049
Graduate	732	595	475	461	574
Total	<u>5690</u>	<u>5860</u>	<u>6435</u>	<u>5467</u>	<u>7032</u>
Geography					
Lower	1365	1725	1704	1899	1518
Upper	839	1008	928	749	707
Graduate	220	180	161	334	232
Total	<u>2424</u>	<u>2913</u>	<u>2793</u>	<u>2982</u>	<u>2457</u>
Government					
Lower	2861	2664	2013	1878	1989
Upper	3762	3277	3826	3619	3039
Graduate	1207	1247	1572	482	469
Total	<u>7830</u>	<u>7188</u>	<u>7411</u>	<u>5979</u>	<u>5497</u>

THE FSU FACT BOOK
TABLE II-1
STATE FUNDABLE
STUDENT CREDIT HOUR ENROLLMENT BY SCHOOL AND COLLEGE
FALL QUARTERS

	<u>1973</u>	<u>1974</u>	<u>1975</u>	<u>1976</u>	<u>1977</u>
International Affairs					
Lower	0	0	0	0	0
Upper	9	0	12	12	10
Graduate	9	3	4	66	60
Total	<u>18</u>	<u>3</u>	<u>16</u>	<u>78</u>	<u>70</u>
Social Sciences					
Lower	0	0	0	0	0
Upper	177	52	0	0	0
Graduate	15	12	18	18	6
Total	<u>192</u>	<u>64</u>	<u>18</u>	<u>18</u>	<u>6</u>
Sociology					
Lower	2637	2535	2649	2460	2571
Upper	2757	3195	2625	2838	2610
Graduate	1151	822	692	567	683
Total	<u>6545</u>	<u>6552</u>	<u>5966</u>	<u>5865</u>	<u>5864</u>
Urban & Regional Planning					
Lower	0	0	0	0	0
Upper	0	75	87	81	102
Graduate	1603	2056	1299	931	694
Total	<u>1603</u>	<u>2131</u>	<u>1386</u>	<u>1012</u>	<u>796</u>

THE FSU FACT BOOK
TABLE II-1
STATE FUNDABLE
STUDENT CREDIT HOUR ENROLLMENT BY SCHOOL AND COLLEGE
FALL QUARTERS

	<u>1973</u>	<u>1974</u>	<u>1975</u>	<u>1976</u>	<u>1977</u>
Public Administration					
Lower	0	0	0	0	0
Upper	0	0	0	75	411
Graduate	0	0	0	834	1527
Total	<u>0</u>	<u>0</u>	<u>0</u>	<u>909</u>	<u>1938</u>
College of Social Science					
Lower	10978	11151	11226	10329	11487
Upper	8387	8645	8578	8288	7928
Graduate	4937	4915	4221	3693	4245
Total	<u>24302</u>	<u>24711</u>	<u>24025</u>	<u>22310</u>	<u>23660</u>
SCHOOL OF SOCIAL WORK					
Lower	63	129	85	103	83
Upper	3040	3096	2943	3417	2793
Graduate	2670	2730	2891	3569	2965
Total	<u>5773</u>	<u>5955</u>	<u>5919</u>	<u>7089</u>	<u>5841</u>
COLLEGE OF COMMUNICATION					
Advertising and Public Relations					
Lower	0	0	0	0	0
Upper	548	472	460	0	0
Graduate	0	0	0	0	0
Total	<u>548</u>	<u>472</u>	<u>460</u>	<u>0</u>	<u>0</u>

THE FSU FACT BOOK
TABLE II-1
STATE FUNDABLE
STUDENT CREDIT HOUR ENROLLMENT BY SCHOOL AND COLLEGE
FALL QUARTERS

	<u>1973</u>	<u>1974</u>	<u>1975</u>	<u>1976</u>	<u>1977</u>
Audiology and Speech Pathology					
Lower	0	0	0	0	0
Upper	0	1584	1566	1184	1296
Graduate	9	638	946	820	755
Total	<u>9</u>	<u>2222</u>	<u>2512</u>	<u>2004</u>	<u>2051</u>
Mass Communication					
Lower	2179	918	621	252	210
Upper	3263	2849	2973	2822	2810
Graduate	513	295	311	262	255
Total	<u>5955</u>	<u>4062</u>	<u>3905</u>	<u>3336</u>	<u>3275</u>
Speech Communication					
Lower	0	1009	1256	1175	833
Upper	0	1688	2023	2549	2951
Graduate	0	309	293	286	270
Total	<u>0</u>	<u>3006</u>	<u>3572</u>	<u>4010</u>	<u>4054</u>
Instructional Communication					
Lower	0	0	6	72	18
Upper	0	82	32	51	40
Graduate	0	0	0	0	0
Total	<u>0</u>	<u>82</u>	<u>38</u>	<u>123</u>	<u>58</u>

THE FSU FACT BOOK
TABLE II-1
STATE FUNDABLE
STUDENT CREDIT HOUR ENROLLMENT BY SCHOOL AND COLLEGE
FALL QUARTERS

	<u>1973</u>	<u>1974</u>	<u>1975</u>	<u>1976</u>	<u>1977</u>
College of Communication Totals					
Lower	2179	1927	1883	1499	1061
Upper	3811	6675	7054	6606	7097
Graduate	522	1242	1550	1368	1280
Total	<u>6512</u>	<u>9844</u>	<u>10487</u>	<u>9473</u>	<u>9438</u>
SCHOOL OF MUSIC					
Lower	7169	6646	6249	5721	5384
Upper	3311	3732	3718	3678	3465
Graduate	1397	1461	1640	1708	1597
Total	<u>11877</u>	<u>11839</u>	<u>11607</u>	<u>11107</u>	<u>10446</u>
DANCE PROGRAM					
Lower	658	623	1283	1319	1193
Upper	297	432	603	646	442
Graduate	140	158	221	196	126
Total	<u>1095</u>	<u>1213</u>	<u>2107</u>	<u>2161</u>	<u>1761</u>
SCHOOL OF THEATRE					
Lower	400	404	390	392	464
Upper	1883	2833	2775	4456	3992
Graduate	1363	1583	1354	1362	1363
Total	<u>3646</u>	<u>4820</u>	<u>4519</u>	<u>6210</u>	<u>5819</u>

THE FSU FACT BOOK
TABLE II-1
STATE FUNDABLE
STUDENT CREDIT HOUR ENROLLMENT BY SCHOOL AND COLLEGE
FALL QUARTERS

	<u>1973</u>	<u>1974</u>	<u>1975</u>	<u>1976</u>	<u>1977</u>
SCHOOL OF VISUAL ARTS					
Art					
Lower	1263	1428	1320	1269	1056
Upper	4294	3588	3871	3783	3400
Graduate	822	851	877	753	757
Total	<u>6379</u>	<u>5867</u>	<u>6068</u>	<u>5805</u>	<u>5213</u>
Interior Design					
Lower	0	70	102	88	70
Upper	1502	2333	2169	2146	1612
Graduate	91	153	167	145	112
Total	<u>1593</u>	<u>2556</u>	<u>2438</u>	<u>2379</u>	<u>1794</u>
Art Education					
Art Education					
Lower	0	0	0	0	0
Upper	861	804	750	631	446
Graduate	178	157	118	85	124
Total	<u>1039</u>	<u>961</u>	<u>868</u>	<u>716</u>	<u>570</u>
Constructive Design					
Lower	0	0	0	0	0
Upper	549	651	670	726	579
Graduate	90	83	43	59	83
Total	<u>639</u>	<u>734</u>	<u>713</u>	<u>785</u>	<u>662</u>

THE FSU FACT BOOK
TABLE II-1
STATE FUNDABLE
STUDENT CREDIT HOUR ENROLLMENT BY SCHOOL AND COLLEGE
FALL QUARTERS

	<u>1973</u>	<u>1974</u>	<u>1975</u>	<u>1976</u>	<u>1977</u>
Art Education					
Lower	0	0	0	0	0
Upper	1410	1455	1420	1357	1025
Graduate	268	240	161	144	207
Total	<u>1678</u>	<u>1695</u>	<u>1581</u>	<u>1501</u>	<u>1232</u>
School of Visual Arts Totals					
Lower	1263	1498	1422	1357	1126
Upper	7206	7376	7460	7286	6037
Graduate	1181	1244	1205	1042	1076
Total	<u>9650</u>	<u>10118</u>	<u>10087</u>	<u>9685</u>	<u>8239</u>
SLAVIC & E. EUROPEAN STUDIES					
Lower	0	0	0	0	0
Upper	6	3	3	3	3
Graduate	57	20	43	15	33
Total	<u>63</u>	<u>23</u>	<u>46</u>	<u>18</u>	<u>36</u>
University Totals					
Lower	97908	96942	93517	89960	87875
Upper	124284	128409	128597	130662	124532
Graduate	51592	50217	48396	44603	45742
Total	<u>273784</u>	<u>275568</u>	<u>270510</u>	<u>265225</u>	<u>258149</u>

THE FSU FACT BOOK
TABLE II-2
STATE FUNDABLE
STUDENT CREDIT HOUR ENROLLMENT BY SCHOOL AND COLLEGE
FOUR QUARTER AVERAGE

	<u>1973-74</u>	<u>1974-75</u>	<u>1975-76</u>	<u>1976-77</u>
COLLEGE OF ARTS AND SCIENCES				
Anthropology				
Lower	1578.00	1254.00	1214.25	962.25
Upper	1136.00	1234.25	1106.00	946.50
Graduate	335.50	284.00	276.50	215.00
Total	3049.50	2772.25	2596.75	2123.75
Biological Sciences				
Lower	3255.25	3065.75	2544.00	3480.25
Upper	3302.75	3230.50	2689.50	2433.50
Graduate	1305.25	1077.00	965.50	964.25
Total	7863.25	7373.25	6199.00	6878.00
Chemistry				
Lower	3465.00	3226.75	3336.00	3459.00
Upper	1485.50	1672.75	1737.50	1559.00
Graduate	928.00	938.00	889.75	812.50
Total	5878.50	5837.50	5963.25	5830.50
Classical Lang. & Lit.				
Classical Civ. & Lit.				
Lower	147.00	205.50	168.00	165.00
Upper	470.25	449.00	527.25	639.00
Graduate	93.00	90.00	86.00	67.00
Total	710.25	744.50	781.25	871.00

THE FSU FACT BOOK
TABLE II-2
STATE FUNDABLE
STUDENT CREDIT HOUR ENROLLMENT BY SCHOOL AND COLLEGE
FOUR QUARTER AVERAGE

	<u>1973-74</u>	<u>1974-75</u>	<u>1975-76</u>	<u>1976-77</u>
Classics				
Lower	0	0	0	26.75
Upper	0	24.00	0	15.00
Graduate	26.75	18.25	12.50	18.50
Total	<u>26.75</u>	<u>42.25</u>	<u>12.50</u>	<u>60.25</u>
Greek				
Lower	96.00	96.75	96.00	85.50
Upper	15.75	17.25	15.00	10.50
Graduate	9.75	11.25	9.75	4.50
Total	<u>121.50</u>	<u>125.25</u>	<u>120.75</u>	<u>100.50</u>
Latin				
Lower	198.75	192.75	156.75	119.25
Upper	51.00	42.00	56.75	37.75
Graduate	24.25	11.25	7.50	9.00
Total	<u>274.00</u>	<u>246.00</u>	<u>221.00</u>	<u>166.00</u>
Classical Lang. & Lit. Totals				
Lower	441.75	495.00	420.75	396.50
Upper	537.00	532.25	599.00	702.25
Graduate	153.75	130.75	115.75	99.00
Total	<u>1132.50</u>	<u>1158.00</u>	<u>1135.50</u>	<u>1197.75</u>
English				
Lower	4972.25	5568.75	5792.00	6218.00
Upper	2983.00	3176.75	2774.50	2480.00
Graduate	964.50	751.75	674.75	539.25
Total	<u>8919.75</u>	<u>9497.25</u>	<u>9241.25</u>	<u>9237.25</u>

THE FSU FACT BOOK
TABLE II-2
STATE FUNDABLE
STUDENT CREDIT HOUR ENROLLMENT BY SCHOOL AND COLLEGE
FOUR QUARTER AVERAGE

	<u>1973-74</u>	<u>1974-75</u>	<u>1975-76</u>	<u>1976-77</u>
Geology				
Lower	1551.00	1586.75	1170.25	876.50
Upper	271.25	239.50	205.50	259.50
Graduate	266.00	295.00	248.50	195.00
Total	<u>2088.25</u>	<u>2121.25</u>	<u>1624.25</u>	<u>1331.00</u>
History				
Lower	5175.75	5441.25	5175.00	5679.75
Upper	3629.50	3438.75	3404.50	3414.00
Graduate	939.75	850.00	727.00	566.50
Total	<u>9745.00</u>	<u>9730.00</u>	<u>9306.50</u>	<u>9660.25</u>
Humanities				
Lower	2490.00	2479.50	2062.75	1680.00
Upper	148.50	114.75	96.00	81.00
Graduate	260.25	264.75	221.75	151.50
Total	<u>2898.75</u>	<u>2859.00</u>	<u>2380.50</u>	<u>1912.50</u>
Mathematics				
Lower	6395.75	7220.50	7503.25	5952.50
Upper	1010.50	920.00	1218.25	2801.00
Graduate	635.00	490.00	363.50	352.00
Total	<u>8041.25</u>	<u>8630.50</u>	<u>9085.00</u>	<u>9150.50</u>
Meteorology				
Lower	1299.50	1306.50	1310.50	1312.00
Upper	353.50	426.25	230.00	344.75
Graduate	402.25	354.50	391.00	362.50
Total	<u>2055.25</u>	<u>2087.25</u>	<u>1931.50</u>	<u>2019.25</u>

THE FSU FACT BOOK
TABLE II-2
STATE FUNDABLE
STUDENT CREDIT HOUR ENROLLMENT BY SCHOOL AND COLLEGE
FOUR QUARTER AVERAGE

	<u>1973-74</u>	<u>1974-75</u>	<u>1975-76</u>	<u>1976-77</u>
Modern Languages				
Chinese				
Lower	103.50	81.25	61.25	38.50
Upper	10.50	18.00	21.75	26.00
Graduate	28.25	39.25	31.25	22.25
Total	<u>142.25</u>	<u>138.50</u>	<u>114.25</u>	<u>86.75</u>
Czechoslovakian				
Lower	0	0	0	0
Upper	0	0	0	0
Graduate	<u>0</u>	<u>0</u>	<u>0</u>	<u>0</u>
Total	0	0	0	0
French				
Lower	2136.25	1895.00	1784.75	1820.75
Upper	228.75	181.50	144.00	198.75
Graduate	230.25	166.25	157.50	164.75
Total	<u>2595.25</u>	<u>2242.75</u>	<u>2086.25</u>	<u>2184.25</u>
German				
Lower	1410.00	1303.25	1276.25	1238.75
Upper	116.25	86.25	92.25	128.25
Graduate	120.00	128.50	121.25	93.00
Total	<u>1646.25</u>	<u>1518.00</u>	<u>1489.75</u>	<u>1460.00</u>
Italian				
Lower	948.50	724.50	635.75	562.75
Upper	66.00	76.50	30.00	72.75
Graduate	22.75	25.50	18.25	17.25
Total	<u>1037.25</u>	<u>826.50</u>	<u>684.00</u>	<u>652.75</u>

THE FSU FACT BOOK
TABLE II-2
STATE FUNDABLE
STUDENT CREDIT HOUR ENROLLMENT BY SCHOOL AND COLLEGE
FOUR QUARTER AVERAGE

	<u>1973-74</u>	<u>1974-75</u>	<u>1975-76</u>	<u>1976-77</u>
Japanese				
Lower	50.75	56.50	36.75	31.25
Upper	0	0	0	8.00
Graduate	0	0	0	1.50
Total	<u>50.75</u>	<u>56.50</u>	<u>36.75</u>	<u>40.75</u>
Modern Languages				
Lower	59.75	63.00	47.00	46.50
Upper	207.00	157.75	138.00	38.25
Graduate	<u>219.75</u>	<u>80.25</u>	<u>60.25</u>	<u>4.75</u>
Total	<u>486.50</u>	<u>301.00</u>	<u>245.25</u>	<u>89.50</u>
Portuguese				
Lower	3.25	26.50	0	45.00
Upper	0	1.50	0	1.50
Graduate	0	1.50	3.75	1.25
Total	<u>3.25</u>	<u>29.50</u>	<u>3.75</u>	<u>47.75</u>
Russian				
Lower	322.00	271.25	271.25	191.50
Upper	62.25	48.00	48.75	66.75
Graduate	<u>32.00</u>	<u>46.75</u>	<u>37.75</u>	<u>14.00</u>
Total	<u>416.25</u>	<u>366.00</u>	<u>357.75</u>	<u>272.25</u>
Serbo-Croatian				
Lower	6.75	6.00	2.25	0.75
Upper	0	.75	.75	0.00
Graduate	<u>1.50</u>	<u>3.75</u>	<u>1.00</u>	<u>0.00</u>
Total	<u>8.25</u>	<u>10.50</u>	<u>4.00</u>	<u>0.75</u>

THE FSU FACT BOOK
TABLE II-2
STATE FUNDABLE
STUDENT CREDIT HOUR ENROLLMENT BY SCHOOL AND COLLEGE
FOUR QUARTER AVERAGE

	<u>1973-74</u>	<u>1974-75</u>	<u>1975-76</u>	<u>1976-77</u>
Slavic				
Lower	0	0	0	0
Upper	10.50	5.25	6.00	12.75
Graduate	10.25	.25	5.00	0
Total	<u>20.75</u>	<u>5.50</u>	<u>11.00</u>	<u>12.75</u>
Spanish				
Lower	2922.00	2558.00	2474.00	2720.50
Upper	430.00	396.00	314.25	325.00
Graduate	246.00	148.50	126.00	131.75
Total	<u>3598.00</u>	<u>3102.50</u>	<u>2914.25</u>	<u>3177.25</u>
Linguistics				
Lower	0	0	0	0
Upper	0	0	0	24.00
Graduate	0	0	0	18.25
Total	<u>0</u>	<u>0</u>	<u>0</u>	<u>42.25</u>
Modern Lang. Totals				
Lower	7962.75	6985.25	6589.25	6696.25
Upper	1131.25	971.50	795.75	902.00
Graduate	910.75	640.50	562.00	468.75
Total	<u>10004.75</u>	<u>8597.25</u>	<u>7947.00</u>	<u>8067.00</u>
Oceanography				
Lower	71.25	117.75	381.00	660.00
Upper	70.75	69.75	37.75	52.00
Graduate	680.75	465.75	370.75	420.50
Total	<u>822.75</u>	<u>653.25</u>	<u>789.50</u>	<u>1132.50</u>

THE FSU FACT BOOK
TABLE II-2
STATE FUNDABLE
STUDENT CREDIT HOUR ENROLLMENT BY SCHOOL AND COLLEGE
FOUR QUARTER AVERAGE

	<u>1973-74</u>	<u>1974-75</u>	<u>1975-76</u>	<u>1976-77</u>
Philosophy				
Lower	549.00	433.50	518.75	392.75
Upper	573.75	379.00	398.00	382.25
Graduate	274.25	270.25	257.00	249.75
Total	<u>1397.00</u>	<u>1082.75</u>	<u>1173.75</u>	<u>1024.75</u>
Physics				
Lower	2216.00	2282.25	2145.25	2113.00
Upper	1037.75	1172.25	1156.75	1092.75
Graduate	762.25	588.25	569.75	452.25
Total	<u>4016.00</u>	<u>4042.75</u>	<u>3871.75</u>	<u>3658.00</u>
Psychology				
Lower	2637.75	2709.75	2707.50	2442.75
Upper	7355.25	6358.25	6286.25	5536.25
Graduate	1711.75	1651.50	1372.75	1011.75
Total	<u>11704.75</u>	<u>10719.50</u>	<u>10366.50</u>	<u>8990.75</u>
Religion				
Lower	1735.50	1791.50	1480.25	1194.25
Upper	1248.00	931.50	828.50	670.75
Graduate	209.00	238.00	219.00	155.50
Total	<u>3192.50</u>	<u>2961.00</u>	<u>2527.75</u>	<u>2020.50</u>
Statistics				
Lower	0	0	0	0
Upper	1210.25	1636.75	1628.25	1665.75
Graduate	668.50	747.50	806.00	721.00
Total	<u>1878.75</u>	<u>2384.25</u>	<u>2434.25</u>	<u>2386.75</u>

THE FSU FACT BOOK
TABLE II-2
STATE FUNDABLE
STUDENT CREDIT HOUR ENROLLMENT BY SCHOOL AND COLLEGE
FOUR QUARTER AVERAGE

	<u>1973-74</u>	<u>1974-75</u>	<u>1975-76</u>	<u>1976-77</u>
Geophysical Fluid Dynamics				
Lower	0	0	0	0
Upper	0	0	0	0
Graduate	91.50	53.25	42.25	35.50
Total	<u>91.50</u>	<u>53.25</u>	<u>42.25</u>	<u>35.50</u>
Molecular Biophysics				
Lower	0	0	0	0
Upper	0	0	0	0
Graduate	164.50	175.25	140.75	165.50
Total	<u>164.50</u>	<u>175.25</u>	<u>140.75</u>	<u>165.50</u>
American Studies				
Lower	0	0	0	0
Upper	209.50	134.25	36.00	99.00
Graduate	18.50	25.25	12.50	10.25
Total	<u>228.00</u>	<u>159.50</u>	<u>48.50</u>	<u>109.25</u>
Asian Studies				
Lower	0	0	0	0
Upper	0	0	0	9.75
Graduate	25.50	26.50	28.50	19.00
Total	<u>25.50</u>	<u>26.50</u>	<u>28.50</u>	<u>28.75</u>
Chemical Physics				
Lower	0	0	0	0
Upper	0	0	0	0
Graduate	0	0	0	0
Total	<u>0</u>	<u>0</u>	<u>0</u>	<u>0</u>

THE FSU FACT BOOK
TABLE II-2
STATE FUNDABLE
STUDENT CREDIT HOUR ENROLLMENT BY SCHOOL AND COLLEGE
FOUR QUARTER AVERAGE

	<u>1973-74</u>	<u>1974-75</u>	<u>1975-76</u>	<u>1976-77</u>
Inter-American Studies				
Lower	0	0	0	0
Upper	0	0	0	0
Graduate	0	0	0	0
Total	<u>0</u>	<u>0</u>	<u>0</u>	<u>0</u>
Honors				
Lower	207.00	83.25	44.25	55.50
Upper	0	0	0	0
Graduate	0	0	0	0
Total	<u>207.00</u>	<u>83.25</u>	<u>44.25</u>	<u>55.50</u>
Comparative World Literature				
Lower	0	0	0	0
Upper	0	23.25	27.00	21.00
Graduate	0	0	0	0
Total	<u>0</u>	<u>23.25</u>	<u>27.00</u>	<u>21.00</u>
College of Arts and Sciences Totals				
Lower	46003.50	46048.00	44395.00	43571.25
Upper	27694.00	26662.25	25255.00	25453.00
Graduate	11707.50	10317.75	9255.00	7967.25
Total	<u>85405.00</u>	<u>83028.00</u>	<u>78905.00</u>	<u>76991.50</u>

THE FSU FACT BOOK
TABLE II-2
STATE FUNDABLE
STUDENT CREDIT HOUR ENROLLMENT BY SCHOOL AND COLLEGE
FOUR QUARTER AVERAGE

	<u>1973-74</u>	<u>1974-75</u>	<u>1975-76</u>	<u>1976-77</u>
COLLEGE OF BUSINESS				
Accounting				
Lower	0	0	0	0
Upper	3938.75	5001.50	5486.25	4996.00
Graduate	<u>173.75</u>	<u>206.25</u>	<u>171.50</u>	<u>141.50</u>
Total	4112.50	5207.75	5657.75	5137.50
Business Administration				
Lower	2222.00	2400.75	2450.00	2341.50
Upper	9179.00	9690.00	10841.00	11295.50
Graduate	<u>2499.50</u>	<u>2202.00</u>	<u>1973.25</u>	<u>1575.50</u>
Total	13900.50	14292.75	15264.25	15212.50
Business Teacher Education				
Lower	503.25	415.50	243.75	0
Upper	289.25	245.25	271.25	7.50
Graduate	<u>0</u>	<u>0</u>	<u>0</u>	<u>0</u>
Total	792.50	660.75	515.00	7.50

THE FSU FACT BOOK
TABLE II-2
STATE FUNDABLE
STUDENT CREDIT HOUR ENROLLMENT BY SCHOOL AND COLLEGE
FOUR QUARTER AVERAGE

	<u>1973-74</u>	<u>1974-75</u>	<u>1975-76</u>	<u>1976-77</u>
Business Law				
Lower	0	0	0	0
Upper	670.25	718.00	643.00	639.25
Graduate	0	0	0	0
Total	<u>670.25</u>	<u>718.00</u>	<u>643.00</u>	<u>639.25</u>
Finance				
Lower	0	0	0	0
Upper	781.00	829.75	1021.25	1018.50
Graduate	0	0	0	0
Total	<u>781.00</u>	<u>829.75</u>	<u>1021.25</u>	<u>1018.50</u>
Hotel and Restaurant Administration				
Lower	0	0	0	0
Upper	1070.00	1242.00	1453.50	1462.50
Graduate	0	0	0	0
Total	<u>1070.00</u>	<u>1242.00</u>	<u>1453.50</u>	<u>1462.50</u>
Risk & Insurance				
Lower	0	0	0	0
Upper	651.75	1044.00	1174.00	1332.00
Graduate	1.50	0	0	0
Total	<u>653.25</u>	<u>1044.00</u>	<u>1174.00</u>	<u>1332.00</u>
Management				
Lower	0	0	0	0
Upper	1298.00	1151.00	1134.00	1200.00
Graduate	0	0	0	0
Total	<u>1298.00</u>	<u>1151.00</u>	<u>1134.00</u>	<u>1200.00</u>

THE FSU FACT BOOK
TABLE II-2
STATE FUNDABLE
STUDENT CREDIT HOUR ENROLLMENT BY SCHOOL AND COLLEGE
FOUR QUARTER AVERAGE

	<u>1973-74</u>	<u>1974-75</u>	<u>1975-76</u>	<u>1976-77</u>
Marketing				
Lower	0	0	0	0
Upper	1277.75	1349.00	1526.00	1533.00
Graduate	0	0	0	0
Total	<u>1277.75</u>	<u>1349.00</u>	<u>1526.00</u>	<u>1533.00</u>
Office Management				
Lower	0	0	0	0
Upper	125.25	162.75	109.50	0
Graduate	0	0	0	0
Total	<u>125.25</u>	<u>162.75</u>	<u>109.50</u>	<u>0</u>
Multi-national				
Business Operations				
Lower	0	0	0	0
Upper	128.00	260.00	257.00	206.00
Graduate	0	0	0	0
Total	<u>128.00</u>	<u>260.00</u>	<u>257.00</u>	<u>206.00</u>
College of Business				
Totals				
Lower	2725.25	2816.25	2693.75	2341.50
Upper	19409.00	21693.25	23916.75	23690.25
Graduate	2674.75	2408.25	2144.75	1717.00
Total	<u>24809.00</u>	<u>26917.75</u>	<u>28755.25</u>	<u>27748.75</u>

THE FSU FACT BOOK
TABLE II-2
STATE FUNDABLE
STUDENT CREDIT HOUR ENROLLMENT BY SCHOOL AND COLLEGE
FOUR QUARTER AVERAGE

	<u>1973-74</u>	<u>1974-75</u>	<u>1975-76</u>	<u>1976-77</u>
COLLEGE OF EDUCATION				
Area of Ed. Mgt. Systems totals				
Lower	115.50	0	0	0
Upper	2631.25	2992.00	2810.50	2270.75
Graduate	5828.50	5706.50	5649.00	5259.75
Total	<u>8575.25</u>	<u>8698.50</u>	<u>8459.50</u>	<u>7530.50</u>
Area of Instructional Design and Personnel Development Totals				
Lower	0	16.00	14.00	16.50
Upper	7446.00	8166.50	7816.25	7520.00
Graduate	2766.75	3268.25	2766.75	2465.75
Total	<u>10212.75</u>	<u>11450.75</u>	<u>10597.00</u>	<u>9972.25</u>
Area of Professional and Clinical Program Totals				
Lower	1283.50	1069.00	964.75	873.25
Upper	7829.75	7380.50	7507.50	7770.50
Graduate	2905.75	2976.75	2879.25	2634.25
Total	<u>12019.00</u>	<u>11426.25</u>	<u>11351.50</u>	<u>11278.00</u>
College of Education Totals				
Lower	1399.00	1085.00	978.75	889.75
Upper	17907.00	18539.00	18134.25	17561.25
Graduate	11501.00	11951.50	11295.00	10329.75
Total	<u>30807.00</u>	<u>31575.50</u>	<u>30408.00</u>	<u>28780.75</u>

THE FSU FACT BOOK
TABLE II-2
STATE FUNDABLE
STUDENT CREDIT HOUR ENROLLMENT BY SCHOOL AND COLLEGE
FOUR QUARTER AVERAGE

	<u>1973-74</u>	<u>1974-75</u>	<u>1975-76</u>	<u>1976-77</u>
COLLEGE OF HOME ECONOMICS				
Clothing and Textiles				
Lower	756.50	804.25	855.00	792.25
Upper	1214.25	1421.50	1492.00	1502.50
Graduate	80.75	120.00	80.00	67.25
Total	<u>2051.50</u>	<u>2345.75</u>	<u>2427.00</u>	<u>2362.00</u>
Food and Nutrition				
Lower	573.75	823.50	763.50	650.75
Upper	866.75	890.75	852.50	1054.75
Graduate	124.00	137.25	130.50	171.25
Total	<u>1564.50</u>	<u>1851.50</u>	<u>1746.50</u>	<u>1876.75</u>
Home and Family Life				
Lower	0	0	0	0
Upper	2994.75	2416.50	2258.75	2177.25
Graduate	456.00	435.00	473.75	430.50
Total	<u>3450.75</u>	<u>2851.50</u>	<u>2732.50</u>	<u>2607.75</u>
Home Economics Education				
Lower	0	0	0	0
Upper	544.00	611.50	669.00	561.25
Graduate	289.00	402.00	339.25	220.00
Total	<u>833.00</u>	<u>1013.50</u>	<u>1008.25</u>	<u>781.25</u>
General Home Economics				
Lower	75	0	0	0
Upper	105.25	210.50	0	0
Graduate	75.25	46.25	32.50	0
Total	<u>181.25</u>	<u>256.75</u>	<u>32.50</u>	<u>0</u>

THE FSU FACT BOOK
TABLE II-2
STATE FUNDABLE
STUDENT CREDIT HOUR ENROLLMENT BY SCHOOL AND COLLEGE
FOUR QUARTER AVERAGE

	<u>1973-74</u>	<u>1974-75</u>	<u>1975-76</u>	<u>1976-77</u>
College of Home Economics Totals				
Lower	1331.00	1627.75	1618.50	1433.00
Upper	5725.00	5550.75	5272.25	5295.75
Graduate	<u>1025.00</u>	<u>1140.50</u>	<u>1056.00</u>	<u>889.00</u>
Totals	<u>8081.00</u>	<u>8319.00</u>	<u>7946.75</u>	<u>7627.75</u>
SCHOOL OF LIBRARY SCIENCE				
Lower	58.75	67.50	44.00	35.75
Upper	692.00	677.50	582.50	540.00
Graduate	<u>2062.75</u>	<u>1977.25</u>	<u>1808.75</u>	<u>1728.50</u>
Totals	<u>2813.50</u>	<u>2722.25</u>	<u>2435.25</u>	<u>2304.25</u>
SCHOOL OF NURSING				
Lower	0	0	0	0
Upper	3838.50	3064.25	2662.75	2622.25
Graduate	<u>0</u>	<u>0</u>	<u>0</u>	<u>0</u>
Totals	<u>3838.50</u>	<u>3064.25</u>	<u>2662.75</u>	<u>2622.25</u>
SCHOOL OF CRIMINOLOGY				
Lower	0	.50	1.75	3.50
Upper	5156.25	5245.50	5916.75	5914.75
Graduate	<u>566.50</u>	<u>959.25</u>	<u>926.75</u>	<u>797.50</u>
Totals	<u>5722.75</u>	<u>6205.25</u>	<u>6845.25</u>	<u>6715.75</u>

THE FSU FACT BOOK
TABLE II-2
STATE FUNDABLE
STUDENT CREDIT HOUR ENROLLMENT BY SCHOOL AND COLLEGE
FOUR QUARTER AVERAGE

	<u>1973-74</u>	<u>1974-75</u>	<u>1975-76</u>	<u>1976-77</u>
COLLEGE OF LAW				
Lower	0	0	0	0
Upper	0	0	0	0
Graduate	5139.25	4874.25	5144.75	5398.00
Total	<u>5139.25</u>	<u>4874.25</u>	<u>5144.75</u>	<u>5398.00</u>
COLLEGE OF SOCIAL SCIENCES				
Economics				
Lower	3129.50	3184.50	3521.25	3383.25
Upper	706.75	896.75	1000.00	795.75
Graduate	623.00	471.50	460.00	455.25
Total	<u>4459.25</u>	<u>4552.75</u>	<u>4981.25</u>	<u>4634.25</u>
Geography				
Lower	1001.00	1216.50	1095.75	1103.25
Upper	757.75	728.25	690.75	588.00
Graduate	167.50	175.50	171.50	202.25
Total	<u>1926.25</u>	<u>2120.25</u>	<u>1958.00</u>	<u>1893.50</u>
Government				
Lower	1817.00	1554.75	1352.25	1317.00
Upper	3162.75	3031.00	3358.75	2859.50
Graduate	1027.00	1160.50	1351.00	633.75
Total	<u>6006.75</u>	<u>5746.25</u>	<u>6062.00</u>	<u>4810.25</u>

THE FSU FACT BOOK
TABLE II-2
STATE FUNDABLE
STUDENT CREDIT HOUR ENROLLMENT BY SCHOOL AND COLLEGE
FOUR QUARTER AVERAGE

	<u>1973-74</u>	<u>1974-75</u>	<u>1975-76</u>	<u>1976-77</u>
International Affairs				
Lower	0	0	0	0
Upper	7.50	1.50	9.75	11.50
Graduate	7.00	1.50	4.25	19.75
Total	<u>14.50</u>	<u>3.00</u>	<u>14.00</u>	<u>31.25</u>
Social Sciences				
Lower	0	0	8.25	0
Upper	118.50	67.75	2.25	0.75
Graduate	3.75	3.00	4.50	4.50
Total	<u>122.25</u>	<u>70.75</u>	<u>15.00</u>	<u>5.25</u>
Sociology				
Lower	1946.25	1916.25	1921.50	1850.25
Upper	2264.75	2454.75	2273.00	2143.75
Graduate	862.25	656.25	601.75	457.50
Total	<u>5073.25</u>	<u>5027.25</u>	<u>4796.25</u>	<u>4451.50</u>
Urban & Regional Planning				
Lower	0	0	0	0
Upper	0	59.25	57.00	66.75
Graduate	1229.00	1370.50	1056.50	724.00
Total	<u>1229.00</u>	<u>1429.75</u>	<u>1113.50</u>	<u>790.75</u>

THE FSU FACT BOOK
TABLE II-2
STATE FUNDABLE
STUDENT CREDIT HOUR ENROLLMENT BY SCHOOL AND COLLEGE
FOUR QUARTER AVERAGE

	<u>1973-74</u>	<u>1974-75</u>	<u>1975-76</u>	<u>1976-77</u>
Public Administration				
Lower	0	0	0	0
Upper	0	0	0	151.75
Graduate	0	0	0	694.50
Total	<u>0</u>	<u>0</u>	<u>0</u>	<u>846.25</u>
College of Social Science Totals				
Lower	7893.75	7872.00	7899.00	7653.75
Upper	7018.00	7239.25	7391.50	6617.75
Graduate	3919.50	3838.75	3649.50	3191.50
Total	<u>18831.25</u>	<u>18950.00</u>	<u>18940.00</u>	<u>17463.00</u>
SCHOOL OF SOCIAL WORK				
Lower	58.00	81.50	62.00	71.20
Upper	3035.25	3089.25	3101.50	3150.00
Graduate	1963.50	2133.00	2323.25	2810.50
Total	<u>5056.75</u>	<u>5303.75</u>	<u>5486.75</u>	<u>6031.75</u>
COLLEGE OF COMMUNICATION				
Advertising and Public Relations				
Lower	0	0	0	0
Upper	446.00	512.00	133.00	0
Graduate	0	0	0	0
Total	<u>446.00</u>	<u>512.00</u>	<u>133.00</u>	<u>0</u>

THE FSU FACT BOOK
TABLE II-2
STATE FUNDABLE
STUDENT CREDIT HOUR ENROLLMENT BY SCHOOL AND COLLEGE
FOUR QUARTER AVERAGE

	<u>1973-74</u>	<u>1974-75</u>	<u>1975-76</u>	<u>1976-77</u>
Audiology and Speech Pathology				
Lower	6.00	0	0	0
Upper	752.50	1273.00	1152.00	1076.75
Graduate	288.50	717.75	866.00	741.50
Total	<u>1047.00</u>	<u>1990.75</u>	<u>2018.00</u>	<u>1818.25</u>
Mass Communication (Includes Speech Comm. for 1973)				
Lower	842.75	376.50	217.50	223.50
Upper	2156.75	2338.25	3042.25	2514.75
Graduate	371.25	296.50	264.50	223.75
Total	<u>3370.75</u>	<u>3011.25</u>	<u>3524.25</u>	<u>2962.00</u>
Speech Communication				
Lower	513.00	756.50	868.00	805.25
Upper	1261.00	1643.50	1813.00	2468.25
Graduate	114.00	260.50	256.50	213.50
Total	<u>1888.00</u>	<u>2660.50</u>	<u>2937.50</u>	<u>3487.00</u>
Instructional Communication				
Lower	0	18.00	36.75	41.25
Upper	0	94.25	32.75	39.75
Graduate	0	0	3.75	0
Total	<u>0</u>	<u>112.25</u>	<u>73.25</u>	<u>81.00</u>

THE FSU FACT BOOK
TABLE II-2
STATE FUNDABLE
STUDENT CREDIT HOUR ENROLLMENT BY SCHOOL AND COLLEGE
FOUR QUARTER AVERAGE

	<u>1973-74</u>	<u>1974-75</u>	<u>1975-76</u>	<u>1976-77</u>
College of Communication Totals				
Lower	1361.75	1151.00	1122.25	1070.00
Upper	4616.25	5861.00	6173.00	6099.50
Graduate	773.75	1274.75	1390.75	1178.75
Total	<u>6751.75</u>	<u>8286.75</u>	<u>8686.00</u>	<u>8348.25</u>
SCHOOL OF MUSIC				
Lower	4846.25	4730.00	4575.50	4208.50
Upper	2737.75	3046.25	2994.75	2924.75
Graduate	1176.00	1422.25	1430.75	1406.25
Total	<u>8760.00</u>	<u>9198.50</u>	<u>9001.00</u>	<u>8539.50</u>
DANCE PROGRAM				
Lower	424.75	449.25	978.75	1093.25
Upper	271.25	356.75	485.00	505.75
Graduate	111.50	147.50	202.75	159.25
Total	<u>807.50</u>	<u>953.50</u>	<u>1666.50</u>	<u>1758.25</u>
SCHOOL OF THEATRE				
Lower	361.50	350.50	342.00	345.50
Upper	1830.50	2156.25	2761.75	4175.50
Graduate	979.00	1292.50	1190.00	1104.75
Total	<u>3171.00</u>	<u>3799.25</u>	<u>4293.75</u>	<u>5625.75</u>

THE FSU FACT BOOK
TABLE II-2
STATE FUNDABLE
STUDENT CREDIT HOUR ENROLLMENT BY SCHOOL AND COLLEGE
FOUR QUARTER AVERAGE

	<u>1973-74</u>	<u>1974-75</u>	<u>1975-76</u>	<u>1976-77</u>
SCHOOL OF VISUAL ARTS				
Art				
Lower	968.25	1041.75	964.50	877.50
Upper	3504.75	3434.00	3269.50	3120.25
Graduate	686.50	677.50	672.50	610.25
Total	<u>5159.50</u>	<u>5153.25</u>	<u>4906.50</u>	<u>4608.00</u>
Interior Design				
Lower	0	44.00	54.50	58.50
Upper	1121.00	1690.75	1783.75	1602.00
Graduate	55.50	124.25	176.00	134.25
Total	<u>1176.50</u>	<u>1859.00</u>	<u>2014.25</u>	<u>1794.75</u>
Art Education & Constructive Design				
Art Education				
Lower	0	0	0	0
Upper	917.75	716.25	623.50	545.75
Graduate	116.25	101.00	92.25	87.25
Total	<u>1034.00</u>	<u>817.25</u>	<u>715.75</u>	<u>633.00</u>
Constructive Design				
Lower	0	0	0	0
Upper	474.00	564.75	603.00	605.50
Graduate	75.50	89.25	71.25	94.00
Total	<u>549.50</u>	<u>654.00</u>	<u>674.25</u>	<u>699.50</u>

THE FSU FACT BOOK
TABLE II-2
STATE FUNDABLE
STUDENT CREDIT HOUR ENROLLMENT BY SCHOOL AND COLLEGE
FOUR QUARTER AVERAGE

	<u>1973-74</u>	<u>1974-75</u>	<u>1975-76</u>	<u>1976-77</u>
Art Education & Constructive Design Totals				
Lower	0	0	0	0
Upper	1391.75	1281.00	1226.50	1151.25
Graduate	<u>191.75</u>	<u>190.25</u>	<u>163.50</u>	<u>181.25</u>
Total	1176.50	1859.00	2014.25	1794.75
School of Visual Arts Totals				
Lower	968.25	1085.75	1019.00	936.00
Upper	6017.50	6405.75	6279.75	5873.50
Graduate	<u>933.75</u>	<u>992.00</u>	<u>1012.00</u>	<u>925.75</u>
Total	7919.50	8483.50	8310.75	7735.25
SLAVIC & E. EUROPEAN STUDIES				
Lower	0	0	0	0
Upper	7.50	1.50	2.25	1.50
Graduate	<u>89.75</u>	<u>93.50</u>	<u>114.00</u>	<u>63.75</u>
Total	97.25	95.00	116.25	65.25
University Totals				
Lower	67431.75	67365.00	65730.25	63663.00
Upper	105955.75	109588.50	110929.75	110425.50
Graduate	<u>44623.50</u>	<u>44823.00</u>	<u>42944.00</u>	<u>39707.50</u>
Total	218011.00	221776.50	219604.00	213756.00

Source: Student Data Course Files for respective years

THE FSU FACT BOOK
Table II-3
GEOGRAPHICAL ORIGIN OF FSU STUDENTS BY
FLORIDA COUNT, Fall 1977

Alachua	182	Lafayette	7
Baker	12	Lake	115
Bay	260	Lee	190
Bradford	17	Leon	3,967
Brevard	524	Levy	20
Broward	1,245	Liberty	20
Calhoun	20	Madison	76
Charlotte	37	Manatee	178
Citrus	34	Marion	135
Clay	99	Martin	58
Collier	107	Monroe	85
Columbia	41	Nassau	32
Dade	2,328	Okaloosa	377
Desoto	12	Okeechobee	13
Dixie	8	Orange	663
Duval	1,126	Osceola	31
Escambia	428	Palm Beach	704
Flagler	10	Pasco	68
Franklin	28	Pinellas	1,036
Gadsden	196	Polk	373
Gilchrist	9	Putnam	30
Glades	1	Santa Rosa	90
Gulf	22	Seminole	204
Hamilton	9	Sarasota	344
Hardee	13	St. Johns	71
Hendry	9	St. Lucie	67
Hernando	37	Sumter	17
Highlands	56	Suwannee	35
Hillsborough	686	Taylor	119
Holmes	36	Union	6
Indian River	79	Volusia	303
Jackson	104	Wakulla	50
Jefferson	82	Walton	39
		Washington	31
		Total	<u>17,411</u>

Source: Fall 1977 (Preliminary) Student Data Course File

THE FSU FACT BOOK
TABLE II-4
FLORIDA COMMUNITY/JUNIOR COLLEGE STUDENTS TRANSFERRING TO FSU, FALL QUARTERS
HEADCOUNT ENROLLMENT AND PERCENT OF TOTAL JUNIOR COLLEGE TRANSFERS

	1974		1975		1976		1977	
	Enr.	%	Enr.	%	Enr.	%	Enr.	%
Brevard Community College	79	4.67	78	4.68	82	4.90	66	4.03
Broward Community College	104	6.14	100	6.00	100	5.98	94	5.74
Central Florida Comm. Coll.	20	1.18	30	1.80	22	1.32	20	1.22
Chipola Junior College	49	2.89	59	3.54	68	4.07	46	2.81
Daytona Beach Comm. Coll.	31	1.83	43	2.58	36	2.15	44	2.69
Edison Junior College	33	1.95	34	2.04	46	2.75	42	2.57
Fla. Jr. Coll. at Jacksonville	108	6.37	105	6.31	111	6.64	113	6.90
Fla. Keys Community College	6	.35	4	.24	6	.36	9	.55
Gulf Coast Community College	56	3.30	55	3.30	59	3.53	48	2.93
Hillsborough Community College	27	1.59	31	1.86	30	1.79	31	1.89
Indian River Community College	30	1.77	26	1.56	25	1.50	42	2.57
Lake City Community College	22	1.30	11	.66	16	.96	19	1.16
Lake Sumter Community College	18	1.06	6	.36	16	.96	21	1.28
Manatee Junior College	87	5.13	62	3.72	52	3.11	60	3.67
Miami-Dade Junior College	293	17.29	311	18.67	291	17.41	288	17.59
North Florida Junior College	50	2.95	38	2.28	31	1.85	26	1.59
Okaloosa-Walton Jr. College	27	1.59	39	2.34	38	2.27	41	2.51
Palm Beach Junior College	80	4.72	99	5.94	88	5.26	78	4.77
Pasco-Hernando Community College	-	-	-	-	-	-	8	.49
Pensacola Junior College	60	3.54	47	2.82	82	4.90	73	4.46
Polk County Community College	36	2.12	33	1.98	30	1.79	39	2.38

THE FSU FACT BOOK
TABLE II-4
FLORIDA COMMUNITY/JUNIOR COLLEGE STUDENTS TRANSFERRING TO FSU, FALL QUARTERS
HEADCOUNT ENROLLMENT AND PERCENT OF TOTAL JUNIOR COLLEGE TRANSFERS

	1974		1975		1976		1977	
	Enr.	%	Enr.	%	Enr.	%	Enr.	%
St. Johns Community College	22	1.30	16	.96	8	.48	12	.73
St. Petersburg Junior College	182	10.74	155	9.31	145	8.67	121	7.39
Santa Fe Junior College	36	2.12	36	2.16	37	2.21	37	2.26
Seminole Junior College	26	1.53	24	1.44	27	1.62	21	1.28
South Florida Jr. College	3	.18	1	.06	4	.24	3	.18
Tallahassee Comm. College	180	10.62	172	10.33	182	10.89	190	11.61
Valencia Community College	30	1.77	51	3.06	40	2.39	45	2.75
Total	<u>1695</u>	100.00	<u>1666</u>	100.00	<u>1672</u>	100.00	<u>1637</u>	100.00

"Geographic Distribution Report" - Fall Quarters 1974;
Board of Regents, Transfer Student Report, 1975-1977

THE FSU FACT BOOK
TABLE II-5
U.S. SOURCES OF FSU ENROLLMENT, FALL 1977

Florida	17,411	Arkansas	17
Georgia	409	Iowa	15
New York	336	Minnesota	15
Virginia	178	New Hampshire	15
New Jersey	161	Delaware	13
Pennsylvania	146	Rhode Island	12
Alabama	142	Kansas	11
Illinois	140	Maine	11
North Carolina	124	Oklahoma	11
Ohio	113	Vermont	8
South Carolina	100	Utah	7
Massachusetts	88	Washington	7
Tennessee	82	Hawaii	6
Maryland	81	North Dakota	6
Connecticut	72	Oregon	6
California	63	South Dakota	5
Louisiana	63	Alaska	4
Texas	54	Montana	4
Michigan	53	Nebraska	4
Indiana	50	Idaho	3
Mississippi	44	New Mexico	3
Kentucky	36	Arizona	2
Missouri	30	Nevada	2
Wisconsin	22	District of Columbia	1
Colorado	18	Wyoming	0
West Virginia	18	Total	20,222

Source: Fall 1977 (Preliminary) Student Data Course File

THE FSU FACT BOOK
TABLE II-6
STUDENT PROFILE

Percentages of Students by Level

Lower	29.1
Upper	44.3
Beginning Graduate	14.5
Advanced Graduate	5.3
Unclassified	6.8
	<u>100.0</u>

Percentages by Residency

Florida Residents	89.8
Non Florida Residents	7.1
Aliens	2.6
Temporary Florida Res.	.5
	<u>100.0</u>

Percentages by Sex

Male	48.7
Female	51.3
	<u>100.0</u>

Percentages by Race

White	83.2
Black	8.3
Hispanic	1.2
Asian	.2
American Indian	.2
Nonresident	1.5
Not Reported	5.4
	<u>100.0</u>

Percentages of Students by College

Arts and Sciences	19.4	Social Work	2.5
Business	18.8	Communication	3.9
Education	13.4	Visual Arts	4.2
Home Economics	4.4	Theatre	1.5
Library Science	.7	Music	3.8
Nursing	2.8	Interdisciplinary	.3
Criminology	4.8	Undecided	6.1
Law	2.5	Special Students	5.5
Social Science	5.4	Total	<u>100.0</u>

Source: Fall 1977 (Preliminary) Student Data Course File

THE FSU FACT BOOK
TABLE II-7
Rank Order of Undergraduate Majors at FSU
FALL 1977

<u>Rank</u>	<u>Major</u>	<u>Number</u>
1	Accounting	1104
2	Biology	1062
3	Criminology	923
4	Business Administration	664
5	Music	619
6	Nursing	576
7	Management	541
8	Psychology	537
9	Childhood Education	462
10	Marketing	432
11	Clothing and Textiles	412
12	Government	395
13	Mass Communication	389
14	Transportation	386
15	Art	385
16	Special Education	358
17	English	310
18	Social Work	297
19	Finance	292
20	Pre-Law	277
21	Mathematics	265
21	Hotel and Restaurant Administration	265
23	Interior Design	208
24	Theatre	205
25	Speech Communication	179
26	Chemistry	159
27	Risk and Insurance	158
28	Food and Nutrition	151
29	History	143

THE FSU FACT BOOK
TABLE II-7
Rank Order of Undergraduate Majors at FSU
FALL 1977

<u>Rank</u>	<u>Major</u>	<u>Number</u>
30	Leisure Services and Studies	135
31	Art Education and Constructive Design	131
32	Meteorology	125
33	Audiology and Speech Pathology	120
34	Foreign Languages	116
34	Sociology	116
34	Physics	116
37	Home Economics Education	111
38	Counseling, Health, and Rehabilitation	96
39	Home and Family Life	95
40	International Affairs	85
41	Anthropology	81
42	Economics	76
43	Dance	72
44	Humanities	65
45	Geology	61
45	Science and Human Affairs	61
47	Vocational and Industrial Arts	59
48	Mathematics Education	52
49	Social Science	48
50	Language Education	43
51	General Home Economics	42
52	Design and Mgt. of Elementary and Secondary Ed.	35
53	Geography	33
54	Religion	28
55	Philosophy	25
56	Library Science, Interdivisional	24
57	Multi-National Business Operations	16
58	Statistics	14

THE FSU FACT BOOK
TABLE II-7
Rank Order of Undergraduate Majors at FSU
FALL 1977

<u>Rank</u>	<u>Major</u>	<u>Number</u>
58	Music, Interdivisional	14
60	Classics	13
61	Library Science	12
62	Others*	55
	Undecided	1279
	Special Students	1154
		<u>16762</u>

*Includes twelve areas with less than ten students each

Source: Fall 1977 (Preliminary) Student Data Course File

THE FSU FACT BOOK
TABLE II-8
Rank Order of Graduate Majors at FSU
FALL 1977

<u>Rank</u>	<u>Major</u>	<u>Number</u>
1	Law	530
2	Design and Management of Post Secondary Ed.	228
3	Social Work	226
4	Music	180
5	Counseling, Health, and Rehabilitation	160
6	Library Science	136
7	Biological Science	133
8	Design and Mgt. of Elementary and Secondary Ed	124
9	Psychology	108
10	Public Administration	106
11	Theatre	102
12	Criminology	83
13	Language Education	79
14	Chemistry	78
15	Audiology and Speech Pathology	71
16	English	70
16	Instructional Design and Development	70
18	Special Education	67
19	Urban and Regional Planning	62
20	Childhood Education	61
21	Business Administration	59
21	History	59
21	Humanities	59
24	Government	57
25	Science Human Affairs	55
26	Economics	54
27	Statistics	49

THE FSU FACT BOOK
TABLE II-8
Rank Order of Graduate Majors at FSU
FALL 1977

<u>Rank</u>	<u>Major</u>	<u>Number</u>
28	Physics	46
29	Developmental Studies in Education	45
29	Accounting	45
31	Oceanography	44
32	Art	43
32	Vocational and Industrial Arts Education	43
32	Geology	43
35	Meteorology	42
36	Movement Science	41
37	Physical Ed., Transportation and Safety Ed.	40
37	Sociology	40
39	Home and Family Life	38
40	Modern Languages	33
41	Educational Evaluation and Research Design	32
41	Mass Communication	32
41	Mathematics	32
44	Management	29
45	Mathematics Education	28
46	Philosophy	27
47	Food and Nutrition	25
48	Anthropology	24
48	Speech Communication	24
50	Leisure Service and Studies	23
50	Geography	23
52	International Affairs	22
52	Art Education and Construction Design	22
53	Marriage and Family Living	21
54	Home Economics Education	20

THE FSU FACT BOOK
TABLE II-8
Rank Order of Graduate Majors at FSU
FALL 1977

<u>Rank</u>	<u>Major</u>	<u>Number</u>
54	Molecular Biophysics	20
54	Finance	20
57	Marketing	16
58	Interior Design	15
58	Clothing and Textiles	15
60	Religion	14
61	Classical Language and Literature	10
62	Others*	34
Total		<u>4137</u>

* Includes eight majors with less than ten students each

Source: Fall 1977 (Preliminary) Student Data Cours File

THE FSU FACT BOOK
TABLE II-9
NATIONAL SOURCES OF STUDENTS
(10 or more)

United States	20,222
Iran	71
Puerto Rico	53
Canada	38
Nigeria	35
South Korea	24
Taiwan	24
India	19
Thailand	19
United Kingdom	16
Egypt	15
Brazil	13
Jamaica	13
Hong Kong	10
Japan	10
Panama	10

Source: Fall 1977 Student Data Course File (Preliminary)

THE FSU FACT BOOK
TABLE II-10
PERCENTAGE DISTRIBUTION OF FSU CREDIT HOURS BY LEVEL
1976-77

<u>DISCIPLINE</u>	<u>LOWER LEVEL</u>	<u>UPPER LEVEL</u>	<u>GRADUATE LEVEL</u>	<u>TOTAL</u>
Agriculture	.00	.00	.00	.00
Architecture and Env. Des.	.09	1.51	2.16	1.25
Area Studies	.00	.10	.24	.10
Biological Science	5.50	2.20	2.43	3.19
Business	3.70	21.46	4.33	12.62
Communications	.42	2.31	.58	1.39
Computer Science	.00	.00	.00	.00
Education	1.40	15.90	26.06	14.05
Engineering	.00	.00	.00	.00
Fine Arts	10.30	10.75	8.73	10.18
Foreign Languages	10.90	.86	1.21	3.78
Health Professions	.00	3.35	1.87	2.07
Home Economics	2.28	4.80	2.24	3.51
Law	.00	.00	13.59	3.02
Letters	16.02	6.12	3.51	8.35
Library Science	.06	.49	4.36	1.23
Mathematics	9.40	4.05	2.70	5.26
Physical Science	13.29	3.00	6.15	6.62
Psychology	3.86	5.01	2.55	4.14
Public Affairs	.12	8.35	10.84	6.57
Social Science	22.57	9.74	6.45	12.65
Interdisc. Studies	.09	.00	.00	.02
Total	100.00	100.00	100.00	100.00

Source: Board of Regents, State University System of Florida

THE FSU FACT BOOK
TABLE II-11
FSU CREDIT HOUR DISTRIBUTION OF EACH DISCIPLINE AND LEVEL
1976-77

<u>DISCIPLINE</u>	<u>LOWER LEVEL</u>	<u>UPPER LEVEL</u>	<u>GRADUATE LEVEL</u>	<u>TOTAL</u>
Agriculture	.00	.00	.00	.00
Architecture & Env. Des.	.02	.75	.48	1.25
Area Studies	.00	.05	.05	.10
Biological Science	1.56	1.09	.54	3.19
Business	1.05	10.61	.96	12.62
Communications	.12	1.14	.13	1.39
Computer Science	.00	.00	.00	.00
Education	.40	7.86	5.79	14.05
Engineering	.00	.00	.00	.00
Fine Arts	2.92	5.32	1.94	10.18
Foreign Languages	3.09	.42	.27	3.78
Health Professions	.00	1.66	.41	2.07
Home Economics	.64	2.37	.50	3.51
Law	.00	.00	3.02	3.02
Letters	4.54	3.03	.78	8.35
Library Science	.02	.24	.97	1.23
Mathematics	2.66	2.00	.60	5.26
Physical Science	3.77	1.48	1.37	6.62
Psychology	1.09	2.48	.57	4.14
Public Affairs	.03	4.13	2.41	6.57
Social Science	6.40	4.82	1.43	12.65
Interdisc. Studies	.02	.00	.00	.02
Total	28.33	49.45	22.22	100.00

Source: Board of Regents, State University System of Florida

THE FSU FACT BOOK
TABLE II-12
FSU STUDENT CREDIT HOURS AS A PERCENTAGE OF THE
TOTAL STATE UNIVERSITY SYSTEM CREDIT HOURS AT EACH LEVEL OF EACH DISCIPLINE
1976-77

<u>DISCIPLINE</u>	<u>LOWER LEVEL</u>	<u>UPPER LEVEL</u>	<u>GRADUATE LEVEL</u>	<u>TOTAL</u>
Agriculture	.00	.00	.00	.00
Architecture and Env. Des.	2.68	19.56	37.09	20.58
Area Studies	.00	10.90	63.41	13.94
Biological Science	16.92	10.68	18.78	14.30
Business	12.16	17.89	11.39	16.53
Communications	8.79	12.93	18.00	12.75
Computer Science	.00	.00	.00	.00
Education	7.40	16.05	18.45	16.38
Engineering	.00	.00	.00	.00
Fine Arts	38.13	33.42	67.49	38.49
Foreign Languages	38.15	14.07	39.80	32.07
Health Professions	.00	14.85	16.07	14.60
Home Economics	73.94	76.64	61.44	73.57
Law	.00	.00	29.23	29.90
Letters	20.81	16.04	28.09	19.20
Library Science	27.27	64.63	62.26	61.67
Mathematics	25.85	11.69	30.85	17.93
Physical Science	22.02	14.74	44.51	21.88
Psychology	31.30	18.12	15.12	19.79
Public Affairs	26.74	34.76	72.29	42.85
Social Science	30.30	14.80	23.84	21.19
Interdisc. Studies	1.61	.00	.00	.66
Total	23.31	16.67	24.80	19.69

Source: Board of Regents, State University System of Florida

SECTION III

The data in this section are descriptive of FSU faculty members.

TABLE III-1. Average Nine and Twelve Month Salaries by College and Rank. This table summarizes budgeted salaries of nine and twelve month faculty by school or college for the last six years. This chart does not include all faculty at FSU, only those in Academic schools and colleges.

TABLE III-2. Distribution of Faculty FTEs. Nine and twelve month faculty appointments are summarized in this table by school and college, and administrative unit.

TABLE III-3. Tenured Faculty by Department, 1977-78. This table summarizes the number of tenured faculty by rank as of February 1, 1978. This includes all changes in the number of tenured faculty through the Fall Quarter 1977. Tenure is granted at the beginning of the Fall Quarter each year and the number changes very little through the course of the academic year.

TABLE III-4. AMOCO Awards. Three outstanding faculty members are awarded \$1000 prizes each year for excellence in undergraduate teaching through a grant from the AMOCO foundation. The winners are selected from nominees by a joint student-faculty committee.

TABLE III-5. The FSU Distinguished Professors. Listed are each of the recipients of the Distinguished Professor Award since the 1957-58 academic year.

TABLE III-6. Developing Scholar Awards. These awards recognize creativity in relatively young professors in order to stimulate research activity and recognize new talented scholars.

TABLE III-7. President's Teaching Awards for Excellence in Teaching. These Awards, funded by the President's Club contributions, recognize excellence in teaching and replace AMOCO Awards of previous years.

TABLE III-8. Committee on Faculty Research Support Awards. The COFRS awards provide monies for support of young faculty to initiate a research program.

TABLE III-9 President's Club Academic Awards. These Awards are funded through the President's Club contributions and designated by the President for support of academic research projects of merit.

THE FSU FACT BOOK
TABLE III-1
Average Nine and Twelve Month Salaries by College and Rank

	<u>1972-73</u>	<u>1973-74</u>	<u>1974-75</u>	<u>1975-76</u>	<u>1976-77</u>	<u>1977-78</u>
<u>NINE-MONTH PROFESSORS</u>						
Arts and Sciences	\$22,580	\$23,715	\$24,438	\$24,056	\$24,900	\$25,705
Business	22,144	23,517	24,702	24,515	24,836	26,438
Communication*	-	21,136	21,474	21,592	23,095	23,932
Criminology*	-	22,300	22,867	23,177	22,953	25,047
Dance*	-	18,000	19,000	19,000	23,755	25,506
Education	19,357	20,501	21,020	20,829	21,702	22,861
Home Economics	18,708	19,717	20,809	21,027	22,240	23,452
Law	21,544	23,712	24,158	24,158	27,720	30,470
Library Science	18,137	19,123	19,612	19,899	21,188	22,062
Music	18,267	18,595	19,478	18,754	19,695	21,094
Nursing	18,650	14,500	12,878	-	-	-
Social Sciences*	-	22,172	23,118	22,840	23,546	24,623
Social Work*	-	17,775	18,155	18,155	22,958	25,667
Theatre*	-	20,633	20,569	17,245	19,130	21,510
Visual Arts*	-	18,492	20,472	20,472	21,619	23,060
University Mean	-	\$22,091	\$22,771	\$22,608	\$23,641	\$24,717

* All of these areas were newly-formed reporting entities (these were previously departments within schools reported here) in 1973-74 and have no relevant historical data on faculty salaries.

(This footnote applies to each page of Table III-1.)

THE FSU FACT BOOK
TABLE III-1
Average Nine and Twelve Month Salaries by College and Rank

	<u>1972-73</u>	<u>1973-74</u>	<u>1974-75</u>	<u>1975-76</u>	<u>1976-77</u>	<u>1977-78</u>
<u>TWELVE-MONTH PROFESSORS</u>						
Arts and Sciences	\$27,600	\$29,500	\$30,300	\$30,812	\$32,518	\$34,066
Business	-	-	32,504	32,504	33,557	36,928
Communication*	-	-	-	-	-	-
Criminology *	-	-	-	-	-	-
Dance*	-	-	-	-	-	-
Education	20,250	25,000	25,904	29,396	30,499	27,104
Home Economics	-	-	-	-	-	-
Law	-	-	-	25,700	28,700	33,500
Library Science	-	-	-	-	-	-
Music	21,633	-	23,850	23,850	25,047	26,617
Nursing	-	-	-	-	-	28,264
Social Sciences*	-	-	-	-	-	-
Social Work*	-	27,128	28,108	28,231	-	-
Theatre*	-	-	-	-	-	-
Visual Arts*	-	-	-	-	-	-
University Mean	24,523	27,108	27,857	27,762	29,206	32,083

THE FSU FACT BOOK
TABLE III-1
Average Nine and Twelve Month Salaries by College and Rank

	<u>1972-73</u>	<u>1973-74</u>	<u>1974-75</u>	<u>1975-76</u>	<u>1976-77</u>	<u>1977-78</u>
<u>NINE-MONTH ASSOCIATE PROFESSORS</u>						
Arts and Sciences	\$15,386	\$15,938	\$16,299	\$15,922	\$16,647	\$17,384
Business	17,452	18,520	19,648	19,368	20,082	20,832
Communication*	-	15,350	16,793	16,679	17,295	17,808
Criminology*	-	18,738	19,399	18,633	19,327	20,367
Dance*	-	-	-	-	12,453	15,056
Education	15,098	15,794	16,402	16,103	16,835	17,995
Home Economics	15,145	15,614	16,411	16,093	16,931	17,942
Law	18,543	21,317	21,746	22,240	23,568	25,759
Library Science	16,016	16,844	17,175	17,199	18,792	19,954
Music	14,495	15,129	15,782	15,331	16,006	16,785
Nursing	13,382	13,877	14,743	14,406	17,850	18,496
Social Sciences*	-	16,732	17,433	17,225	18,360	19,257
Social Work*	-	-	27,000	13,867	18,747	20,073
Theatre*	-	14,722	15,925	15,858	16,273	17,069
Visual Arts*	-	14,470	16,084	15,075	15,943	16,984
University Mean	15,567	16,229	16,852	16,531	17,363	18,225

THE FSU FACT BOOK
TABLE III-1
Average Nine and Twelve Month Salaries by College and Rank

	<u>1972-73</u>	<u>1973-74</u>	<u>1974-75</u>	<u>1975-76</u>	<u>1976-77</u>	<u>1977-78</u>
<u>TWELVE-MONTH ASSOCIATE PROFESSORS</u>						
Arts and Sciences	\$18,233	\$15,200	\$15,978	\$17,453	\$ -	\$26,000
Business	-	-	-	-	-	-
Communication*	-	-	-	-	-	-
Criminology*	-	-	-	-	-	-
Dance*	-	-	-	-	-	-
Education	18,000	19,500	20,217	21,698	20,766	23,536
Home Economics	-	-	-	-	-	-
Law	20,000	23,200	24,400	-	-	-
Library Science	-	-	-	-	-	-
Music	-	-	18,400	18,400	21,800	23,400
Nursing	18,000	-	19,314	19,314	25,214	-
Social Sciences*	-	-	-	-	-	-
Social Work*	-	20,451	21,262	21,354	-	-
Theatre*	-	-	-	-	-	-
Visual Arts*	-	-	-	-	-	-
University Mean	19,705	20,611	21,253	21,264	22,973	25,793

THE FSU FACT BOOK
TABLE III-1
Average Nine and Twelve Month Salaries by College and Rank

	<u>1972-73</u>	<u>1973-74</u>	<u>1974-75</u>	<u>1975-76</u>	<u>1976-77</u>	<u>1977-78</u>
<u>NINE-MONTH ASSISTANT PROFESSORS</u>						
Arts and Sciences	\$12,038	\$12,639	\$13,245	\$13,315	\$13,659	\$14,260
Business	14,673	15,354	16,037	15,848	17,645	18,885
Communication*	-	13,793	13,872	14,814	14,388	14,360
Criminology*	-	15,190	15,578	15,175	15,695	16,244
Dance*	-	10,950	11,925	11,925	13,570	-
Education	12,702	13,561	14,094	14,224	15,211	15,698
Home Economics	12,408	13,017	13,427	13,112	14,586	15,168
Law	14,775	14,629	16,250	16,250	18,850	20,872
Library Science	13,087	14,932	15,712	15,500	17,093	18,094
Music	11,664	12,081	12,233	11,921	12,808	14,305
Nursing	12,221	12,635	13,613	13,415	15,667	15,526
Social Sciences*	-	13,541	14,077	13,531	14,245	15,235
Social Work*	-	12,323	13,039	14,006	15,634	16,582
Theatre*	-	11,533	12,473	11,890	13,505	13,750
Visual Arts*	-	11,560	11,929	11,820	12,560	13,429
University Mean	12,493	13,193	13,806	13,766	14,630	15,573

THE FSU FACT BOOK
TABLE III-1
Average Nine and Twelve Month Salaries by College and Rank

	<u>1972-73</u>	<u>1973-74</u>	<u>1974-75</u>	<u>1975-76</u>	<u>1976-77</u>	<u>1977-78</u>
<u>TWELVE-MONTH ASSISTANT PROFESSORS</u>						
Arts and Sciences	\$10,500	\$11,400	\$12,370	\$16,983	\$25,500	\$21,000
Business	-	-	-	-	-	-
Communication*	-	-	12,900	12,900	15,205	17,671
Criminology*	-	-	-	-	-	-
Dance*	-	-	-	-	-	-
Education	13,212	13,881	15,967	16,203	18,221	20,368
Home Economics	10,600	-	13,100	-	-	-
Law	-	-	-	18,000	-	-
Library Science	-	-	-	-	-	-
Music	-	-	-	17,050	19,825	21,299
Nursing	-	-	-	-	-	-
Social Science*	-	-	-	-	-	-
Social Work*	-	17,553	17,704	17,528	-	-
Theatre*	-	-	-	-	-	-
Visual Arts*	-	-	-	-	-	-
University Mean	15,993	16,693	17,359	16,967	19,131	21,398

THE FSU FACT BOOK
TABLE III-1
Average Nine and Twelve Month Salaries by College and Rank

	<u>1972-73</u>	<u>1973-74</u>	<u>1974-75</u>	<u>1975-76</u>	<u>1976-77</u>	<u>1977-78</u>
<u>NINE-MONTH INSTRUCTORS</u>						
Arts and Sciences	\$7,165	\$6,965	\$ 7,016	\$ 8,816	\$10,536	\$10,798
Business	8,198	8,463	11,595	11,933	14,584	15,842
Communication*	-	9,100	10,025	10,025	-	-
Criminology*	-	9,861	-	-	13,500	15,560
Dance*	-	-	-	-	-	-
Education	10,037	10,210	11,661	16,908	-	12,082
Home Economics	9,300	10,100	10,225	10,225	11,173	12,600
Law	10,000	16,700	17,100	-	-	-
Library Science	-	-	-	-	-	-
Music	9,067	10,052	10,267	10,327	11,869	13,485
Nursing	10,869	11,523	12,599	13,064	13,823	14,672
Social Sciences*	-	7,250	-	-	-	-
Social Work*	-	8,000	11,460	11,460	9,764	-
Theatre*	-	14,000	-	-	-	-
Visual Arts*	-	7,800	8,200	7,850	10,189	10,892
University Mean	8,484	8,748	9,606	11,410	12,554	13,038

THE FSU FACT BOOK
TABLE III-1
Average Nine and Twelve Month Salaries by College and Rank

	<u>1972-73</u>	<u>1973-74</u>	<u>1974-75</u>	<u>1975-76</u>	<u>1976-77</u>	<u>1977-78</u>
<u>TWELVE-MONTH INSTRUCTORS</u>						
Arts and Sciences	\$13,050	\$11,000	\$11,710	\$ -	\$ -	\$19,318
Business	-	-	12,000	12,000	18,074	-
Communication*	-	11,585	12,160	12,160	14,368	-
Criminology*	-	-	-	-	-	-
Dance*	-	-	-	-	-	-
Education	10,277	8,807	9,625	12,708	14,381	17,467
Home Economics	-	-	-	-	-	-
Law	-	-	-	-	-	-
Library Science	11,320	-	-	-	-	-
Music	10,800	-	11,500	-	-	-
Nursing	-	-	-	-	-	-
Social Sciences*	-	-	-	-	-	-
Social Work*	-	14,000	11,000	11,000	-	-
Theatre*	-	-	-	-	-	-
Visual Arts*	-	-	-	-	-	-
University Mean	11,914	13,053	13,272	13,091	15,846	19,334

THE FSU FACT BOOK
TABLE III-1
Average Nine and Twelve Month Salaries by College and Rank

	<u>1972-73</u>	<u>1973-74</u>	<u>1974-75</u>	<u>1975-76</u>	<u>1976-77</u>	<u>1977-78</u>
<u>NINE-MONTH ALL RANKS</u>						
Arts and Sciences	\$15,862	\$16,838	\$17,703	\$18,488	\$19,439	\$20,445
Business	15,959	16,748	18,709	19,178	20,392	21,540
Communication*	-	16,498	17,460	17,467	18,221	18,955
Criminology*	-	16,833	17,900	18,125	18,734	19,433
Dance*	-	12,360	13,340	13,340	15,384	17,669
Education	15,530	16,564	17,385	17,785	18,740	19,475
Home Economics	14,749	15,593	16,336	16,369	17,652	18,782
Law	17,616	19,414	21,167	21,585	25,096	26,971
Library Science	15,727	16,975	18,075	18,182	19,727	20,522
Music	14,264	14,919	15,971	15,799	16,758	18,252
Nursing	11,987	12,389	13,430	13,359	14,959	16,007
Social Sciences*	-	16,702	18,479	18,634	19,810	20,752
Social Work*	-	13,420	16,808	14,808	18,778	20,234
Theatre*	-	14,000	15,932	15,873	16,241	17,072
Visual Arts*	-	14,497	15,683	15,563	16,520	17,719
University Mean	15,597	16,335	17,438	17,506	19,037	20,029

THE FSU FACT BOOK
TABLE III-1
Average Nine and Twelve Month Salaries by College and Rank

	<u>1972-73</u>	<u>1973-74</u>	<u>1974-75</u>	<u>1975-76</u>	<u>1976-77</u>	<u>1977-78</u>
<u>TWELVE-MONTH ALL RANKS</u>						
Arts and Sciences	\$18,312	\$16,460	\$17,267	\$19,266	\$24,803	\$25,096
Business	-	-	22,252	22,252	33,557	36,928
Communication*	-	11,585	12,530	12,530	14,658	17,671
Criminology*	-	-	-	-	-	-
Dance*	-	-	-	-	-	-
Education	13,831	15,784	17,048	19,306	20,210	21,109
Home Economics	10,600	-	13,100	-	-	-
Law	20,000	23,200	24,400	21,850	28,700	33,500
Library Science	11,320	-	-	-	-	-
Music	18,925	-	19,400	-	-	24,910
Nursing	18,000	-	19,314	19,314	25,214	28,264
Social Sciences*	-	-	-	-	-	-
Social Work*	-	20,486	21,223	21,419	-	-
Theatre*	-	-	-	-	-	-
Visual Arts*	-	-	-	-	-	-
University Mean	18,107	18,971	19,846	19,961	21,530	24,298

Source: Faculty Salaries Report

THE FSU FACT BOOK
TABLE III-2
DISTRIBUTION OF FACULTY FTE's

	<u>9 Month Appointment</u>	<u>12 Month Appointment</u>	<u>Total</u>
Central Administration			
President	-	1.00	1.00
Human Affairs	1.00	-	1.00
Minority Affairs	-	1.00	1.00
Academic Affairs			
Curriculum Career- Information Services	-	1.00	1.00
Articulation Affairs	-	1.00	1.00
Horizons Unlimited	-	1.00	1.00
Vice President for Academic Affairs	1.00	3.00	4.00
College of Arts and Sciences	359.50	6.00	365.50
College of Business	77.33	3.00	80.33
College of Education	143.91	9.75	153.66
College of Home Economics	34.00	1.00	35.00
School of Library Science	12.00	1.00	13.00
School of Nursing	25.00	2.00	27.00
School of Criminology	17.00	.85	17.85
College of Law	20.00	1.00	21.00

THE FSU FACT BOOK
TABLE III-2
DISTRIBUTION OF FACULTY FTE's

	<u>9 Month Appointment</u>	<u>12 Month Appointment</u>	<u>Total</u>
College of Social Sciences	92.00	1.00	93.00
School of Social Work	23.00	1.00	24.00
College of Communication	27.00	2.00	29.00
School of Music	59.75	6.00	65.75
School of Theatre	16.00	1.00	17.00
School of Visual Arts	41.00	-	41.00
Graduate Studies and Research	4.00	5.00	9.00
Basic Studies	-	1.00	1.00
Continuing Education	4.00	4.00	8.00
Overseas Programs	2.00	-	2.00
Educational Design and Evaluation Systems	9.09	1.00	10.09
Total	<u>968.58</u>	<u>54.60</u>	<u>1023.18</u>

Source: 1977-78 Operating Budget

THE FSU FACT BOOK
TABLE III-3
1977-78 Tenured Faculty by Department
As of February 1, 1978

	PROFESSOR		ASSOCIATE PROFESSOR		ASSISTANT PROFESSOR		TOTALS	
	<u>Male</u>	<u>Female</u>	<u>Male</u>	<u>Female</u>	<u>Male</u>	<u>Female</u>	<u>Male</u>	<u>Female</u>
COLLEGE OF ARTS & SCIENCES								
Anthropology	0	0	5	0			5	0
Bio. Sci.	11	1	16	2			27	3
PIMS	2	0	2	0			4	0
Chemistry	23	1	3	0			26	1
Classics	1	1	5	0			6	1
English	8	1	13	3			21	4
Geology	4	0	1	0			5	0
History	16	1	13	0			29	1
Math	19	0	10	0			29	0
Modern Languages	4	1	19	3	1	1	24	5
Philosophy	4	0	2	0			6	0
Physics	16	0	7	1			23	1
Meteorology	8	0	2	0			10	0
Statistics	7	0	3	0			10	0
Psychology	15	0	10	0			25	0
Oceanography	4	1	5	0			9	1
Religion	6	0	3	0			9	0
GFDI	1	0	1	0			2	0
Dean	2	0	0	0			2	0
Arts & Sciences Totals	151	7	120	9	1	1	272	17

THE FSU FACT BOOK
TABLE III-3
1977-78 Tenured Faculty by Department
As of February 1, 1978

	PROFESSOR		ASSOCIATE PROFESSOR		ASSISTANT PROFESSOR		TOTALS	
	<u>Male</u>	<u>Female</u>	<u>Male</u>	<u>Female</u>	<u>Male</u>	<u>Female</u>	<u>Male</u>	<u>Female</u>
COLLEGE OF BUSINESS								
Business Dean	1	0	0	0			1	0
Hotel & Rest. Admin.	0	0	1	0			1	0
Accounting	6	0	3	0			9	0
Risk & Ins.	1	0	2	0			3	0
Management	6	0	4	1			10	1
Marketing	7	1	1	0			8	1
Finance	5	0	3	0			8	0
Business Totals	26	1	14	1			40	2
COLLEGE OF EDUCATION								
Education Deans & Admin.	4	0	1	1	0	0	5	1
Instructional Design	22	0	10	5	1	1	33	6
Prof. & Clin. Svc.	11	3	5	4	1	1	17	8
Educ. Mgt. Sys.	22	1	12	0	1	0	35	1
Education Totals	59	4	28	10	3	2	90	16
COLLEGE OF HOME ECONOMICS								
Home Economics Dean	0	1	0	0	0	0	0	1
Clothing & Textiles	0	2	0	2	0	1	0	5
Food & Nutrition	0	3	1	0	0	0	0	4
Home & Family Life	0	4	1	1	0	1	1	6
Home Economics Educ.	0	0	0	1	0	0	0	1
Home Economics Totals	0	10	1	5	0	2	1	17

THE FSU FACT BOOK
TABLE III-3
1977-78 Tenured Faculty by Department
As of February 1, 1978

	<u>PROFESSOR</u>		<u>ASSOCIATE PROFESSOR</u>		<u>ASSISTANT PROFESSOR</u>		<u>TOTALS</u>	
	<u>Male</u>	<u>Female</u>	<u>Male</u>	<u>Female</u>	<u>Male</u>	<u>Female</u>	<u>Male</u>	<u>Female</u>
SCHOOL OF LIBRARY SCIENCE								
Library Science Dean	1	0	0	0			1	0
Library School	2	1	3	1			5	2
Library Science Totals	3	1	3	1			6	2
SCHOOL OF NURSING								
Nursing	0	0	0	5			0	5
SCHOOL OF CRIMINOLOGY								
Criminology	5	0	3	0			8	0
COLLEGE OF LAW								
Law	10	0	3	1			13	1
COLLEGE OF SOCIAL SCIENCES								
Social Science Dean	1	0	0	0			1	0
Economics	7	0	8	1			15	1
Geography	4	0	2	0			6	0
Urban & Regional Planning	2	0	6	0			8	0
Government	7	0	6	0	1	1	14	1
Public Administration	2	0	2	0			4	0
Sociology	8	0	2	0			10	0
Black Studies	0	0	0	0			0	0
Inst. for Social Research	5	0	3	1			8	1
Social Science Totals	36	0	29	2	1	1	66	3

THE FSU FACT BOOK
TABLE III-3
1977-78 Tenured Faculty by Department
As of February 1, 1978

	<u>PROFESSOR</u>		<u>ASSOCIATE PROFESSOR</u>		<u>ASSISTANT PROFESSOR</u>		<u>TOTALS</u>	
	<u>Male</u>	<u>Female</u>	<u>Male</u>	<u>Female</u>	<u>Male</u>	<u>Female</u>	<u>Male</u>	<u>Female</u>
SCHOOL OF SOCIAL WORK								
Social Work	3	2	3	4			6	6
COLLEGE OF COMMUNICATION								
Audiology & Speech Path.	3	0	1	0			4	0
Communication	7	0	5	1			12	1
Communication Totals	10	0	6	1			16	1
DANCE PROGRAM	0	1	2	1			2	2
SCHOOL OF MUSIC								
Music Dean	1	0	0	0			1	0
Music	21	5	7	4			28	9
SCHOOL OF THEATRE								
Theatre	4	0	4	0			8	0
SCHOOL OF VISUAL ARTS								
Interior Design	0	1	0	0			0	1
Art	3	0	3	2			6	2
Art Ed. & Const. Des.	2	2	1	1			3	3
Visual Arts Totals	5	3	4	3			9	6

THE FSU FACT BOOK
TABLE III-3
1977-78 Tenured Faculty by Department
As of February 1, 1978

	PROFESSOR		ASSOCIATE PROFESSOR		ASSISTANT PROFESSOR		TOTALS	
	<u>Male</u>	<u>Female</u>	<u>Male</u>	<u>Female</u>	<u>Male</u>	<u>Female</u>	<u>Male</u>	<u>Female</u>
GRADUATE STUDIES & RESEARCH								
Dean								
Computing Center	2	0	0	0			2	0
FREAC	1	0	0	0			1	0
	2	0	0	0			2	0
Graduate Studies & Research Totals	5	0	0	0			5	0
STUDENT SERVICES								
STUDENT AFFAIRS								
Basic Studies	1	0	0	0			1	0
Curricular Career Info. Services	0	0	1	0			1	0
Continuing Education	1	0	0	0			1	0
East Europe & Slavic Studies	1	0	0	0			1	0
Education Design & Evaluation Systems								
Evaluation Services	0	0	1	0			1	0
Instructional Research	3	0	0	0			3	0
Center for Educ. Design	1	0	0	0	1	0	2	0
Student Services Totals	7	0	2	0	1	0	10	0

THE FSU FACT BOOK
TABLE III-3
1977-78 Tenured Faculty by Department
As of February 1, 1978

	PROFESSOR		ASSOCIATE PROFESSOR		ASSISTANT PROFESSOR		TOTALS	
	Male	Female	Male	Female	Male	Female	Male	Female
UNIVERSITY REGULAR FACULTY	345	34	230	47	6	6	581	87
ADMINISTRATIVE FACULTY								
Dean of Faculties	0	1	0	0			0	1
Labor Relations	1	0	0	0			1	0
Vice President of Academic Affairs	2	0	0	0			2	0
Developmental Research School*	1	0	0	1			1	1
Canal Zone	0	0	2	0			2	0
Tenured Non-Faculty							1	2
Grand Total							588	91

* Developmental Research Faculty included are only those tenured in a regular academic unit

Source: Dean of Faculties Office

THE FSU FACT BOOK
TABLE III-4
AMOCO AWARDS

Standard Oil Foundation Awards for Excellence
in Undergraduate Teaching

1967	Homer A. Black Donald Horward Dorothy Schlitt	Business (Accounting) History Science Education
1968	Richard M. Baker, Jr. Robert J. Kansky Jo Ann James	Marketing Mathematics Education Modern Languages
1969	Harrison Chase William H. Long William H. Heflin	Geography Meteorology Foreign Language Education
1970	Azzurra B. Givens Edward K. Mellon Charles T. Wellborn	Modern Languages Chemistry Religion
1971	Jerome H. Stern Ronald J. Clark Carolyn Schluck	English Chemistry Elementary Education
1972	Joyotpaul Chaudhuri W. W. deGrummond Jeanne Ryan	Government Classics Habilitative Science

THE FSU FACT BOOK

TABLE III-4

AMOCO AWARDS

Standard Oil Foundation Awards for Excellence
in Undergraduate Teaching

1973	Kay Judkins John Carey Marilyn Gombosi	Home Economics Religion Music
1974	David Ammerman Janet Burroway James C. Smith	History English Psychology
1975	William T. Lhamon Hans S. Plendl Robert J. Rubanowice	English Physics History
1976	Eugene Crook Robert Carter Morris Marjorie Sparkman	English Physics Nursing
1977	Richard L. Chapple George E. Weaver Leo Sandon, Jr.	Modern Languages Psychology Religion

Source: Office of Information Services, F.S.U.

THE FSU FACT BOOK
TABLE III-5

THE FSU DISTINGUISHED PROFESSORS

1957-58	William Hudson Rogers	English
1958-59	Marian Doris Irish	Government
1959-60	Anna Forbes Liddell	Philosophy
1960-61	Ernest Max Grunwald	Chemistry
1961-62	Wiley Lee Housewright	Music
1962-63	Michael Kasha	Chemistry
1963-64	Dorothy Lois Breen Hoffman	Modern Languages
1964-65	Carlisle Floyd, Jr.	Music
1965-66	Betty Monaghan Watts	Food & Nutrition
1966-67	Raymond K. Sheline	Chemistry
1967-68	Gregory R. Choppin	Chemistry
1968-69	Eugene D. Nichols	Mathematics Education
1969-70	Earl Frieden	Chemistry
1970-71	Ralph Allan Bradley	Statistics
1971-72	Lloyd Mumbauer Beidler	Biological Science
1972-73	Kellogg Wesley Hunt	English

THE FSU FACT BOOK
TABLE III-5

THE FSU DISTINGUISHED PROFESSORS

1973-74	I. Richard Savage	Statistics
1974-75	Daniel Ralph Kenshalo	Psychology
1975-76	Richard Gordon Fallon	Theatre
1976-77	Elena Nikolaidi	Music
1977-78	Richard L. Rubenstein	Religion
1978-79	Seymour L. Hess	Meteorology

Source: Florida State University Bulletin

THE FSU FACT BOOK
TABLE III-6
Developing Scholar Awards

1977-78	Robert Conn	Finance
1977-78	James Gapinski	Economics
1977-78	Daniel Simberloff	Biology
1977-78	Gunther Stamm	Art
1978-79	Jayne Alley	Music
1978-79	Virgil Goedken	Chemistry
1978-79	James Orcutt	Sociology
1978-79	Friedrich Stephan	Psychology
1978-79	Susan Thomas	Education

Source: Office of Graduate Studies and Research

THE FSU FACT BOOK
TABLE III-7
President's Teaching Awards for Excellence in Teaching

1978	James Jones	History
1978	Clifford Madsden	Music
1978	Peter Stowell	English

Source: Office of the President

THE FSU FACT BOOK
TABLE III-8
Committee on Faculty Research Support Awards
Summer 1978 (COFRS)

Carolyn Bridger	Music
Kathleen Deagan	Anthropology
Ronald Diamond	Physics
Penny Gilmer	Chemistry
Richard Klosterman	Urban and Regional Planning
David McGlothlin	Chemistry
Winsor Schmitt, Jr.	Public Administration
Kathryn Scott	Education

Source: Office of Graduate Studies and Research

THE FSU FACT BOOK
TABLE III-9
President's Club Academic Awards

1977-78

Ronald Blazek	Library Science
Eugene Crook	English
Nancy Douglas	Education
John Fenstermaker	English
Henry Glick	Government
Bryan Goff	Music
Tom Hoffer	Communication
Julia Schwartz	Art Education
Chei Swei Wang	Biological Science
Lutz Wiese	Biological Science
Leitch Wright	History

1978-79

Rodney Anderson	History
Alexander Bassin	Criminology
Darryl Bruce	Psychology
Daniel Eisenberg	Modern Languages
Loretta Ellias	Biological Science
Michael Greenberg	Biological Science
Paul Halpern	History
W. F. Herrnkind	Biological Science
Donald Horward	History
Karyl Louwenaar	Music
Alan Mabe	Philosophy
Patricia Martin	Social Work
Walter Moore, Jr.	Religion

THE FSU FACT BOOK
TABLE III-9
President's Club Academic Awards

1978-79

Harry Morris	English
Patricia Russo	Law
William Tanner	Geology
Jack Taylor	Music
Norris Williams	Biological Science
George Yost	English

Source: Office of the President

	1970-71	1971-72	1972-73	1973-74	1974-75
Total Stock	1,125,385	1,271,460	1,170,011	1,125,474	1,280,000
Reference Stock (vol.)	51,765	51,901	51,901	51,901	51,901
Newspapers	100	100	100	100	100
Periodicals (1/2-1/2)	10,000	10,000	10,000	10,000	10,000

SECTION IV

This section summarizes library statistics at FSU.

TABLE IV-1. Library Statistics. This table provides summary information of library holdings and expenditures.

Expenditures	\$ 571,200	\$ 571,200	\$ 571,200	\$ 571,200	\$ 571,200
Material	\$ 440,000	\$ 440,000	\$ 440,000	\$ 440,000	\$ 440,000
Other Operating Expenditures	\$ 130,000	\$ 130,000	\$ 130,000	\$ 130,000	\$ 130,000
Personnel	\$ 120,000	\$ 120,000	\$ 120,000	\$ 120,000	\$ 120,000
Facilities	\$ 50,000	\$ 50,000	\$ 50,000	\$ 50,000	\$ 50,000

THE FSU FACT BOOK
TABLE IV-1
LIBRARY STATISTICS

	1972-73 ^c	1973-74 ^{bd*}	1974-75 ^{bd}	1975-76 ^{bd}	1976-77 ^{bd}
Book Stock	1,118,349	1,211,420	1,270,011	1,325,474	1,406,750
Volumes Added (net) ^a	61,946	93,071	58,591	55,463	43,904
Newspapers ^a	100	135	142	128	124
Periodicals & Serials ^a	10,509	12,175	12,703	12,152	12,646
Staff Salaries (Inc. Student Assts.)	\$1,328,562	\$1,416,869	\$1,461,521	\$1,460,881	\$1,585,099
Expenditures for Books and Related Materials	\$1,481,026	\$1,107,553	\$1,079,833	\$ 920,079	\$ 873,479
Binding	\$ 80,401	\$ 72,885	\$ 71,516	\$ 61,879	\$ 62,497
Other Operating Expenditures	\$ 200,160	\$ 230,173	\$ 198,801	\$ 128,693	\$ 78,668
Per Student Total Operating Expenditures (Fall FTE)	\$ 150.31	\$ 148.80	\$ 148.97	\$ 120.25	\$ 120.34
Ratio of Library Expenditures to University Totals (% of E&G)	5.54% ^e	5.64% ^e	5% ^{e**}	4%	2.53%

^a Currently on standing order.

^b Includes microforms counted as follows: 1 reel equal 1 volume; all other microforms counted by the piece and divided by 8

^c Law collection subtracted from the report at this point as being separately budgeted.

^d Law Library figures included.

^e Percentage figure is based on budget allocations, not on actual Expenditures.

*E&G exp. taken from "Summary of Estimated Expenditures 1973-74" found in 1973-74 Operating Budget; E&G volume.

**-- Operating Budget E&G volumes.

Source: Office of the Director of Libraries

SECTION V

This section summarizes financial activity at FSU.

TABLE V-1. Analysis of Income. This table summarizes major sources of revenue for the last fiscal year.

TABLE V-2. Analysis of Expenditures. This table summarizes expenditures for the fiscal year 1975-76 by major category of expenditure.

TABLE V-3. Actual Operating Expenses. This table includes operating expenditures by fund. It does not include Transfers or Research Overhead in Contracts and Grants. In 1975-76 financial statements were prepared on an accrual basis. These accrual adjustments are included except in Auxiliaries, Athletics, and Working Capital because the financial statement did not give out one accrual adjustment for the three funds.

TABLE V-4. Education and General Budgeted FTEs and Dollars. Lab School positions are reported as A&P in this table.

TABLE V-5. E & G Expenditures from the End-of-Year Ledgers. Salary, OPS, E&G, OCO charges as reported in the end of year departmental ledgers.

TABLE V-6. Contract and Grant Expenditures for Academic Areas. Salary, OPS, Expense, OCO Overhead charges as reported in the Financial Report for research and training grants.

THE FSU FACT BOOK

TABLE V-1

Analysis of Income: Sources of Income by Major Revenue Classification

<u>Sources of Income</u>	<u>1976-77</u>
Educational and General:	
Student Tuition and Fees	\$ 2,030,590.31
Government Appropriations - State	53,496,915.00
Grants, Contracts and Gifts - Governmental	19,264,944.85
Grants, Contracts and Gifts - Private	1,684,457.04
Sales and Services of Educational Activities	713,957.11
Other Sources:	
Other	15,670.49
Investment Income	1,383.90
Total Educational and General	<u>\$77,207,918.70</u>
Auxiliary Enterprises:	
Sales and Services - Operations	\$11,742,058.59
Other Sources:	
Investment Income	66,475.08
Total Auxiliary Services	<u>\$11,808,533.67</u>
Total Current Revenue	<u><u>\$89,016,452.37</u></u>

Source: "Financial Report - 1977" University Comptroller

TABLE V-2

Analysis of Expenditures: Disbursements of Funds by Major Classification

<u>Expenditures and Mandatory Transfers</u>	<u>1976-77</u>
Educational and General:	
Instruction	\$26,128,523.43
Research	12,753,169.37
Academic Support	10,364,613.96
Student Services	2,784,927.32
Institutional Support	7,710,664.39
Operation and Maintenance of Plant	7,213,207.79
Scholarships	3,781,493.97
Public Service	5,583,224.21
Total Educational and General Expenditures	<u>\$76,319,824.44</u>
Auxiliary Enterprises:	
Expenditures	\$11,165,099.49
Mandatory Transfers for:	
Principal and Interest	418,394.00
Total Auxiliary Enterprises	<u>\$11,583,493.49</u>
Reversions - State Appropriations	\$ 22,921.81
Total Expenditures, Mandatory Transfers and Reversions	<u>\$87,926,239.74</u>
Other Transfers and Additions (Deductions):	
Excess of Restricted Receipts over Transfers to Revenue	\$ 1,061,933.11
Non-Mandatory Transfers	<u>271,719.54</u>
Net Increase (decrease) in Fund Balances	<u>\$ 2,423,865.28</u>

Source: "Financial Report - 1977" University Comptroller

THE FSU FACT BOOK

TABLE V-3

ACTUAL OPERATING EXPENDITURES

<u>Operating Expenditures*</u>	<u>1973-74</u>	<u>1974-75</u>	<u>1975-76</u>	<u>1976-77</u>
Extension	\$ 575,001	\$ 556,766	\$ 508,388	\$ 635,182
General Revenue/Incidental	49,191,507	51,932,308	51,122,255	52,882,271
Contracts and Grants	13,571,444	15,364,608	15,992,756	16,039,431
Athletics	2,222,631	2,016,802	2,628,847	2,220,508
Auxiliaries	9,230,607	10,157,940	10,388,212	10,921,398
Working Capital	2,580,959	2,144,058	1,914,393	1,886,759
Agency	2,139,158	2,248,951	1,802,697	1,793,604

* From the Financial Statements. The FS 195 was used for 1975-76, 1976-77 for Athletics, Auxiliaries, and Working Capital.

THE FSU FACT BOOK
TABLE V-4
EDUCATION AND GENERAL BUDGETED FTEs AND DOLLARS*

	<u>1974-75</u>	<u>1975-76</u>	<u>1976-77</u>	<u>1977-78</u>
1				
9 & 12 mo. Faculty				
FTE	1142.01	1082.60	1064.13	1023.18
Rate	\$20,288,170	\$19,640,542	\$20,541,290	\$20,838,511
Administrative & Professional				
FTE	184.50	195.50	194.50	182.13
Rate	\$ 2,988,084	\$ 3,164,521	\$ 3,290,425	\$ 3,419,635
Career Service				
FTE	1285.50	1287.50	1283.40	1224.35
Rate	\$10,804,913	\$10,732,975	\$11,609,673	\$11,938,206

1
Excludes Summer

*From the Operating Budget for all years except 1976-77. In this year, a revised Operating Budget was used after faculty raises and adjustments had been made.

Source: FSU Operating Budgets

THE FSU FACT BOOK
TABLE V-5
E&G EXPENDITURES FROM THE END-OF-YEAR LEDGERS

	<u>1974-75</u>	<u>1975-76</u>	<u>1976-77</u>
<u>Administration and Student Services</u>			
President's Office	\$ 183,093	\$ 167,682	\$ 157,235
Human Affairs	73,858	69,903	80,355
Executive Vice President	119,009	135,323	87,133
Attorney's Office	48,005	51,461	56,776
Budget and Analysis	47,777	176,863	233,306
University Planning	82,102	-	-
Budget Office	44,669	33,755	-
University System and Research	132,984	86,344	-
Internal Control	108,809	5,747	-
Development	in Univ Rel	in Univ Rel	108,772
Reserve	-	-	12,913
Sub-total - Central Admin.	\$ 840,306	\$ 727,078	\$ 736,490
Vice President for Administrative Affairs	\$ 133,208	\$ 147,424	\$ 142,884
Comptroller	876,695	998,420	996,718
Operations Analysis, Admin. Procedures	77,217	-	64,495
Purchasing	247,739	241,364	276,453
Personnel	314,580	319,392	342,090
ADP	405,471	299,464	439,718
NWRDC	455,384	633,746	788,100
UNIFTRAN	128,998	-	-
Sub-total - Admin. Affairs	\$2,639,292	\$2,639,810	\$3,050,458

THE FSU FACT BOOK
TABLE V-5
E&G EXPENDITURES FROM THE END-OF-YEAR LEDGERS

	<u>1974-75</u>	<u>1975-76</u>	<u>1976-77</u>
<u>University Relations</u>			
Vice President University Relations	\$ 133,415	\$ 128,123	\$ 128,560
National Merit Program	-	-	2,579
Alumni Affairs	120,027	112,618	116,147
Information Services	165,924	159,585	161,168
Publications	56,624	56,540	63,402
Business Services	42,770	42,085	33,793
Development	67,252	64,048	-
Sub-total - University Relations	\$ 586,012	\$ 562,999	\$ 505,649
General Expense Accounts	\$ 668,969	\$ 637,950	\$ 677,538
<u>Student Services</u>			
Educational Services V.P.	\$ 134,985	\$ 87,883	\$ 82,000
Academic Advising Service	127,418	75,482	28,556
Religious Affairs	197	-	-
Career Planning-Placement	104,135	103,483	104,089
Curr-Career Info. Services	49,508	38,968	46,695
Orientation Center	36,486	31,980	33,160
International Student Office	18,675	26,570	16,025
Counseling Center	312,556	140,185	42,099
Student Affairs Officer	116,651	218,694	159,170
Student Assistance Center	8,618	13,598	96,194
Academic and Career Counseling	22,199	-	-
Student Services	-	14,587	22,637
Sub-Total - Student Services	\$ 931,428	\$ 751,430	\$ 630,625

THE FSU FACT BOOK
TABLE V-5
E&G EXPENDITURES FROM THE END-OF-YEAR LEDGERS

	<u>1974-75</u>	<u>1975-76</u>	<u>1976-77</u>
<u>Academic Student Services</u>			
Registrar	\$ 679,287	\$ 670,400	\$ 748,935
Graduate School Admission	54,525	54,637	53,962
Co-op Education	26,214	26,171	32,164
Minority Student Services	59,347	6,998	-
Student Financial Affairs	119,664	130,989	152,874
Admissions	118,491	128,060	135,828
Black Cultural Center	-	32,851	57,817
Matriculation Services	37,496	7,250	-
Articulation	70,311	41,219	47,151
Horizons Unlimited	44,112	27,855	38,402
Sub-total - Academic Student Services	\$ 530,160	\$ 1,126,430	\$ 1,267,133
Total-Administration and Student Services	<u>\$ 6,875,454</u>	<u>\$ 6,445,697</u>	<u>\$ 6,867,893</u>
<u>Instruction and Research</u>			
Academic Affairs	\$ 116,770	\$ 119,206	\$ 162,834
EEO	58,112	25,906	4,850
Fine Arts	22,719	22,598	15,953
Southern Regional Scholarship	9,189	9,722	9,451
CWSP Matching	81,702	74,000	-
Unallocated	28,740	4,549	-
Exit Exam	6,306	4,762	-
Sub-total - I and R Administration	\$ 323,538	\$ 260,743	\$ 193,088

THE FSU FACT BOOK
TABLE V-5
E&G EXPENDITURES FROM THE END-OF-YEAR LEDGERS

	<u>1974-75</u>	<u>1975-76</u>	<u>1976-77</u>
Arts and Sciences (Includes Nuclear Ser., IMB, GFDI)	\$11,939,618	\$11,702,547	\$12,173,923
Provost II	77,840	83,311	81,584
Education (Includes Educ Res Inst.)	4,534,671	4,491,408	4,656,580
Business	2,341,910	2,437,383	2,589,627
Home Economics	884,941	886,971	917,417
Library Science	439,875	427,511	450,059
Nursing	477,920	477,564	586,770
Provost III	84,220	73,484	65,269
Criminology	453,959	514,905	541,664
Law	913,452	927,685	992,018
Social Sciences	2,226,808	2,172,131	2,314,388
Social Work	769,528	799,894	768,429
Black Studies	-	-	32,950
Institute for Social Research	428,577	418,202	399,808
Provost IV	105,319	79,593	123,746
Communication	711,100	715,198	772,191
Music	1,666,561	1,600,964	1,721,193
Dance	119,325	117,995	130,289
Theatre	450,645	470,922	476,985
Visual Arts	820,660	837,900	925,037
Slavic & European Studies	60,229	75,312	78,283

THE FSU FACT BOOK
TABLE V-5
E&G EXPENDITURES FROM THE END-OF-YEAR LEDGERS

	<u>1974-75</u>	<u>1975-76</u>	<u>1976-77</u>
Provost V	\$ 154,690	\$ 154,074	\$ 168,039
Marine Facilities Lab	120,806	102,184	101,347
Computing Center	1,167,198	951,803	1,105,850
I and R Support	138,623	-	-
Academic Press	37,324	26,789	26,279
Lab Animal	118,890	97,380	94,196
Geography Research (FREAC)	47,654	64,635	24,273
COFRS	140,934	3,023	-
Univ. Fellowships	102,187	20,376	40,823
Equalizing Opportunity	-	7,284	6,000
Instructional System Development	294,132	341,416	393,767
Evaluation Services	113,955	111,810	118,048
Council for Faculty Awards	67,190	-	-
Media Services	33,576	47,464	-
Continuing Educ - Summer Sessions	525,086	447,115	420,389
Ctr. for Professional Development	98,894	155,245	166,198
Florence and London Programs	53,305	45,520	54,546
Basic Studies	<u>96,990</u>	<u>103,525</u>	<u>122,340</u>
Total Instruction and Research	<u>\$33,142,130</u>	<u>\$32,231,266</u>	<u>\$33,833,393</u>
Libraries			
Law	\$ 239,360	\$ 218,328	\$ 416,762
Strozier	<u>2,239,285</u>	<u>2,407,683</u>	<u>2,220,820</u>
Total Libraries	<u>\$ 2,478,645</u>	<u>\$ 2,626,011</u>	<u>\$ 2,637,582</u>

THE FSU FACT BOOK
TABLE V-5
E&G EXPENDITURES FROM THE END-OF-YEAR LEDGERS

	<u>1974-75</u>	<u>1975-76</u>	<u>1976-77</u>
PO&M			
Utilities' Cost	\$ 2,194,797	\$ 2,899,590	\$ 3,267,808
Others	<u>5,288,037</u>	<u>5,050,566</u>	<u>5,279,787</u>
Total PO&M	<u>\$ 7,482,834</u>	<u>\$ 7,950,156</u>	<u>\$ 8,547,595</u>
Activities Related to Instruction			
ROTC	\$ 33,112	\$ 36,060	\$ 38,573
Ninth Grade Testing	75,186	55,991	7,730
Lab School	1,071,956	1,129,102	1,192,455
Media Services	341,785	328,311	363,699
FSUTV & FM	<u>406,092</u>	<u>417,579</u>	<u>415,717</u>
Total Activities Related to Instruction	<u>\$ 1,928,131</u>	<u>\$ 1,967,043</u>	<u>\$ 2,018,174</u>
Intercollegiate Athletics	\$ 25,000	\$ -	\$ -
Prior Year Adjustments (State Comptroller)	\$ 39,550	\$ 9,461	\$ -
Total E&G Expenditures	\$51,971,744	\$51,229,634	\$ 53,904,637

Source: End of Year Departmental Ledgers

THE FSU FACT BOOK
TABLE V-6
Contract and Grant Expenditures for Academic Areas

	<u>1974-75</u>	<u>1975-76</u>	<u>1976-77</u>
College of Arts and Sciences	\$ 6,568,486	\$ 7,195,993	\$ 6,910,240
College of Business	84,292	135,562	133,287
College of Education	4,558,277	6,010,322	5,430,946
School of Home Economics	95,941	145,329	102,447
School of Library Science	167,365	143,648	134,618
School of Nursing	104,325	73,698	69,092
School of Criminology	269,580	343,671	130,642
College of Law	60,389	70,574	79,783
College of Social Sciences	790,185	605,655	391,043
School of Social Work	656,697	586,405	468,722
College of Communication	345,805	298,728	121,876
School of Music	52,051	3,531	451
Dance Program	5,927	1,790	3,223

THE FSU FACT BOOK
TABLE V-6
Contract and Grant Expenditures for Academic Areas

	<u>1974-75</u>	<u>1975-76</u>	<u>1976-77</u>
School of Visual Arts	\$	\$ 10,760	\$ 1,123
East European Studies	87,820	-	10,334
Institute Social Research	<u>205,171</u>	<u>326,772</u>	<u>270,706</u>
Academic Area Total	<u>\$14,052,311</u>	<u>\$15,952 438</u>	<u>\$14,258,533</u>

Source: Financial Report

1979-80

<u>Date of Founding:</u>	1857	<u>Physical Plant:</u>	\$240 Million+ on 346 Acres
<u>President:</u>	Dr. Bernard F. Sliger	<u>Construction Planned or</u>	
		<u>In Progress (1979-80):</u>	\$23 Million
<u>Location:</u>	Tallahassee, Fla. 32306	<u>On-campus Housing:</u>	
<u>Type:</u>	Public, Coeducational		4,131 Single Students in Undergraduate Housing
<u>Enrollment:</u>			987 Graduate Students/Families in University-Operated Apartments
	Freshmen & Sophomores: 6,495	<u>Off-campus Housing:</u>	
	Juniors & Seniors: 9,290		1,450 Students Living in 19 Sorority and 23 Fraternity Houses
	Graduate Students: 3,405		259 Living in Scholarship Houses
	Unclassified Students: 1,400		1,000 in Privately Operated Residence Halls
	Continuing Education: 700	<u>Other Group Housing and in the Community:</u>	
	First-Professional: 538		14,010 Students
<u>Head-Count (Fall Qtr. '79):</u>	21,828		
<u>Alumni On Record:</u>		<u>Strozler Library Holdings:</u>	
	Residing in Florida: 56,612		Bound Volumes 1,338,701
	Living Out of State: 24,024		Serials 13,543
	In Other Countries: 644		Microform Units 1,793,217
	<u>Total Known Addresses:</u> 77,280		Photo Archives 264,701
	Unknown or Deceased: 23,168		Recordings 15,502
	Graduates Since 1857: 101,210		Maps & Charts 121,779
<u>Full & Part-Time Personnel:</u>	6,887		Documents 732,405
	(Includes Students)		

UNIVERSITY BUDGETS AND PERSONNEL
1979-80 FISCAL YEAR

<u>Category of Revenue</u>	<u>Amount</u>	<u>Percent of Budget</u>	<u>Number of Full-Time & Part-Time Positions:</u>		
			<u>Faculty</u>	<u>Adm/Prof</u>	<u>Career Service</u>
Education & General	\$71,684,563	59.85	1,242	280	2,107
Agency	2,078,129	1.74	-	7	44
Athletics	3,573,605	2.98	-	38	25
Auxiliaries,					
Working Cap.	19,342,042	16.15	-	65	602
Contracts					
and Grants	21,800,000	18.20	117	18	344
Extension,					
Incidental	1,288,176	1.08	10	10	13
TOTALS:	\$119,766,515	100.00	1,269	418	3,135

Total Faculty & Staff 4,822

ARCHIVES
F. S. U. LIBRARY

